

TM11-6625-1826-40P

TECHNICAL MANUAL

**GENERAL SUPPORT MAINTENANCE
REPAIR PARTS AND SPECIAL TOOLS LIST
(INCLUDING DEPOT MAINTENANCE
REPAIR PARTS AND SPECIAL TOOLS)
FOR
TEST SET, TERRAIN-CALIBRATION
INDICATOR AN / AAM-33
(NSN 6625-00-403-1070)**

HEADQUARTERS, DEPARTMENT OF THE ARMY

MARCH 1976

Technical Manual

No. 11-6625-1826-40P

**HEADQUARTERS
DEPARTMENT OF THE ARMY
WASHINGTON, DC, 4 March 1976**

**General Support Maintenance
Repair Parts and Special Tools Lists
(Including Depot Maintenance Repair Parts and Special Tools)
For
TEST SET, TERRAIN-CALIBRATION INDICATOR AN / AAM-33
(NSN 6625-00-403-1070)
Current as of 25 October 1975**

		Page	Illus Figure
Section	I. INTRODUCTION	1	
	II REPAIR PARTS LIST	5	
Group	I Test set, Terrain-Calibration Indicator AN/AAM-33	5	1
	1A1 Control unit	5	2
	1A1A1 Generator video	7	3
	1A1A2 Processor video	11	4
	1A1A3 Miscellaneous circuits	13	5
	1A1A4 Control power input	15	6
	1A1A5 Power supply. + 15 Vdc	17	7
	1A1A6 Power supply. -15 Vdc	17	8
	1A1A7 Integrated circuits, power supply	20	9
	1A1A Power supply 150/250 Vdc	22	10
	1A1A9 Heat sink assembly	24	11
	1A1A10 Filter assembly	24	12
Group 1W1 through 1W1Q.	Cable assemblies	27	13
Section	III SPECIAL TOOLS LIST (Not applicable)		
	IV FSN. PART NUMBER INDEX	30	

*This manual supersedes TM11-6625-1826-45P, 28 June 1971.

SECTION I

INTRODUCTION

1. Scope

This manual lists repair parts; special tools; and other support equipment required for operation and performance of general support and depot maintenance of the Test Set, Terrain-Calibration Indicator AN/AAM-33.

2. General

This manual of repair parts and special tools lists is divided into the following sections:

a. *Section II. Repair Parts List.* A list of repair parts authorized for use in performance of maintenance. The list also includes parts which must be removed for replacement of the authorized parts. Parts lists are composed of functional groups in ascending numerical sequence, with the parts in each group listed in figure and item number sequence.

b. *Section III. Special Tools List.* Not applicable.

c. *Section IV. Federal Stock Number and Part Number Index.* A list, in ascending numerical sequence, of all Federal stock numbers appearing in the listings, followed by a list, in alphameric sequence, of all part numbers appearing in the listings. Federal stock number and part numbers are cross-referenced to each illustration figure and item number appearance.

3. Explanation of Columns

The following provides an explanation of columns found in the tabular listings:

a. *Illustration.* This column is divided as follows:

(1) Figure number. Indicates the figure number of the illustration in which the item is shown.

(2) Item number. The number used to identify each item called out in the illustration.

b. *Source, Maintenance, and Recoverability Codes (SMR).*

(1) *Source code.* Source codes are assigned to support items to indicate the manner of acquiring support items for maintenance, repair, or overhaul of end items. Source codes are entered in the first and second positions of the Uniform SMR Code format as follows:

code	Definition
PA-	Item procured and stocked for anticipated or known usage.
PD -	Support item, excluding support equipment, procured for initial issue or outfitting and stocked only for subsequent or additional initial issues or outfittings. Not subject to automatic replenishment.

Code

Definition

AH—Item to be assembled at general support maintenance level.

XA—Item is not procured or stocked because the requirements for the item will result in the replacement of the next higher assembly.

XB—Item is not procured or stocked. If not available through salvage, requisition.

NOTE

Cannibalization or salvage may be used as a source of supply for any items source coded above except those coded XA, XD, and aircraft support items as restricted by AR 700-42.

(2) Maintenance code. Maintenance codes are codes assigned to indicate the levels of maintenance authorized to USE and REPAIR support items. The maintenance codes are entered in the third and fourth positions of the Uniform SMR Code format as follows:

(a) The maintenance code entered in the third position will indicate the lowest maintenance level authorized to remove, replace, and use the support item. The maintenance code entered in the third position will indicate one of the following levels of maintenance:

Code	Application/Explanation
O-	Support item is removed, replaced, used at the organizational level.
H-	Support item is removed, replaced, used at the general support level.
D-	Support items that are removed, replaced, used at depot, mobile depot, specialized repair activity only.

(b) The maintenance code entered in the fourth position indicates whether the item is to be repaired and identifies the lowest maintenance level with the capability to perform complete repair (i.e., all authorized maintenance functions). This position will contain one of the following maintenance codes:

Code	Application/Explanation
H-	The lowest maintenance level capable of complete repair of the support item is the general support level.
D-	The lowest maintenance level capable of complete repair of the support item is the depot level, performed by depot.
Z-	Nonreparable. No repair is authorized.

(3) **Recoverability code.** Recoverability codes are assigned to support items to indicate the disposition action on unserviceable items. The recoverability code is entered in the fifth position of the Uniform SMR Code format as follows:

Recoverability Codes

Definition

Z—Nonreparable item. When unserviceable, condemn and dispose at the level indicated in position 3.

D—Reparable item. When beyond lower level repair capability, return to depot. Condemnation and disposal not authorized below depot level.

c. Federal Stock Number. Indicates the Federal stock number assigned to the item.

NOTE

For requisitioning purposes, the Federal stock number must be converted to the National stock number by adding “-00-” after the Federal stock classification (FSC) code (first four digits). For example, FSN 6625-553-0142 converts to NSN 6625-00-553-0142.

d. Part Number. Indicates the primary number used by the manufacturer (individual, company, firm, corporation, or Government activity), which controls the design and characteristics of the item by means of its engineering drawings, specifications standards, and inspection requirements, to identify an item or range of items.

NOTE

When a stock numbered item is requisitioned, the repair part received may have a different part number than the part being replaced.

e. Federal Supply Code for Manufacturer (FSCM). The FSCM is a 5-digit numeric code listed in SB 708-42 which is used to identify the manufacturer, distributor, or Government agency, etc.

f. Description. Indicates the Federal item name and, if required, a minimum description to identify the item.

g. Unit of Measure (U/M). Indicates the standard of the basic quantity of the listed item as used in performing the actual maintenance function. This measure is expressed by a two-character alphabetical abbreviation (e.g., ea, in, pr, etc.). When the unit of measure differs from the unit of issue, the lowest unit of issue that will satisfy the required units of measure will be requisitioned.

h. Quantity Incorporated in Unit. Indicates the quantity of the item used in the breakout shown on the illustration figure, which is prepared for a

functional group, subfunctional group or an assembly. A “V” appearing in this column in lieu of a quantity indicates that no specific quantity is applicable, (e.g., shims, spacers, etc.).

4. Special Information

a. Detailed assembly instructions for items source code to be assembled are found in TM 11-6625-1826-50. Assembly components are listed immediately following the item to be assembled.

b. The following publications pertain to the Test Set, Terrain-Calibration Indicator AN/AAM-33 and its components:

TM 11-6625-1826-12, Test Set, Terrain-Calibration Indicator AN/AAM-33.

TM 11-6625-1826-40, Test Set, Terrain-Calibration Indicator AN/AAM-33.

TM 11-6625-1826-50, Test Set, Terrain-Calibration Indicator AN/AAM-33.

5. How to Locate Repair Parts

a. When Federal stock number or part number is unknown:

(1) First. Using the table of contents, determine the functional group within which the repair part belongs. This is necessary since illustrations are prepared for functional groups and listings are divided into the same groups.

(2) Second. Find the illustration covering the functional group to which the repair part belongs.

(3) Third. Identify the repair part on the illustration and note the illustration figure and item number of the repair part.

(4) Fourth. Using the Repair Parts Listing, find the figure and item number noted on the illustration.

b. When Federal stock number or part number is known:

(1) First. Using the Index of Federal stock numbers and part numbers, find the pertinent Federal stock number or part number. This index is in ascending FSN sequence followed by a list of part numbers in ascending alphameric sequence, cross-referenced to the illustration figure number and item number.

(2) Second. After finding the figure and item number, locate the figure and item number in the repair parts list.

6. Abbreviations

Not applicable.

7. Recommendation for Maintenance Publications Improvements

You can help to improve this manual by calling attention to errors and by recommending improvements. Your letter or DA form 2028

TM11-6625-1826-40P

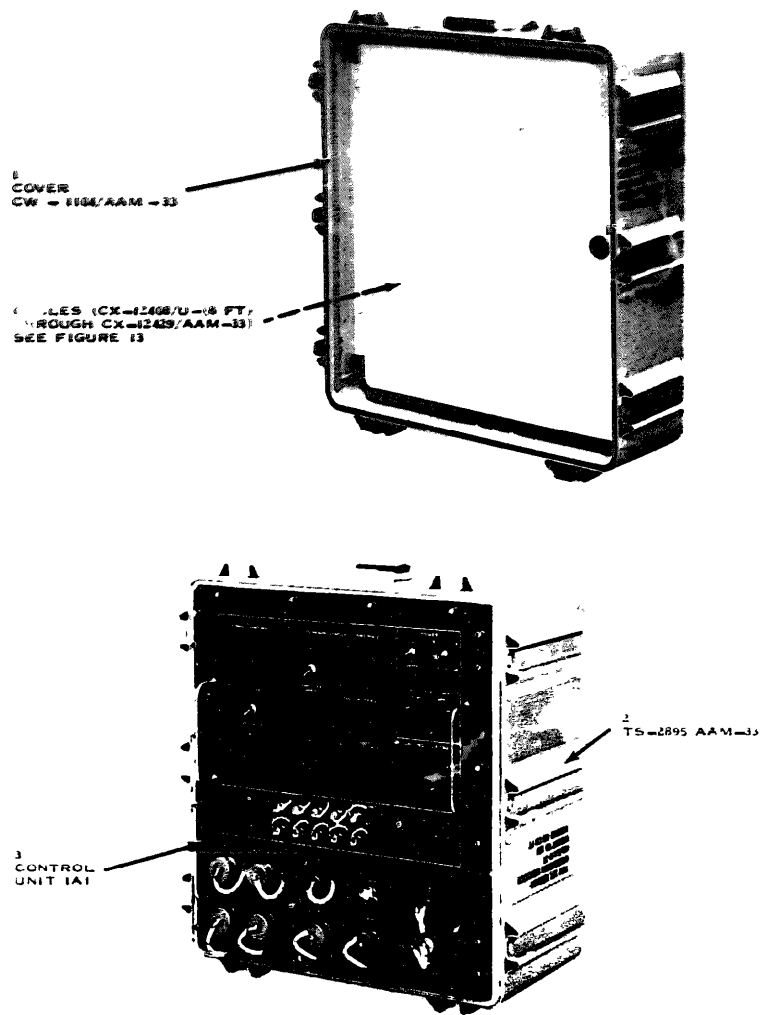
(Recommended Changes to Publications and Blank Forms) should be mailed directly to Commander, US Army Electronics Command, ATTN: AMSEL-MA-

Q, Fort Monmouth, NJ 07703. A reply will be furnished direct to you.

SECTION II. REPAIR PARTS LIST

TM 11-6625-1826-40P

(1) ILLUSTRATION		(2) PART CODE	(3) FEDERAL STOCK NUMBER	(4) PART NUMBER	(5) FIGURE	(6) DESCRIPTION	(7) QUANTITY OF EACH	(8) QUANTITY IN EACH
(A) FIG. NO.	(B) ITEM NO.							
GROUP: 1 TEST SET THERMAL-CALIBRATION								
1	1	ABRZ	6625-403-5843	CM-1104/AM-33	80058	COVER, TEST SET	EA	1
1	2	FOOD	6625-408-5054	TS-2995/AM-33	83058	TEST SET, THERMAL-CALIBRATION INDICATOR	EA	1
1	3	ABRD		69235-1	96214	ELECTRONIC CONTROL UNIT, THERMAL CONTROL INDICATOR	EA	1
GROUP: 1A1 CONTROL UNIT								
2	1	PARZ	5935-762-0312	MS9024-10-03	81349	JACK, TIP	EA	3
2	2	PARZ	5935-702-2199	MS9024-10-02	81349	JACK, TIP	EA	5
2	3	PARZ	5930-405-0468	538075-2	96214	SWITCH, ROTARY	EA	1
2	4	PARZ	5930-421-8979	19-1963-1	92812	SWITCH ROTARY	EA	1
2	5	PARZ	5961-723-3602	1N3612	81349	SEMICONDUCTOR DEVICE, DIODE	EA	5
2	6	PARZ	6240-155-3602	MS25237-327	96906	LAMP, INCANDESCENT	EA	3
2	7	PARZ	5925-854-7358	MS9019-5-50	81349	CIRCUIT BREAKER	EA	1
2	8	PARZ	5935-422-4784	REPCSGF21AB1	97954	CONNECTOR, PLUG, ELECTRICAL	EA	1
2	9	PARZ	5935-497-0933	REPCSGF21AEL	97954	CONNECTOR, PLUG, ELECTRICAL	EA	1
2	10	PARZ	5925-118-1098	MS9019-1-32	81349	CIRCUIT BREAKER	EA	1
2	11	PARZ	5935-689-1884	REPCSGF21ABM	97954	CONNECTOR, PLUG, ELECTRICAL	EA	1
2	12	XBRZ		497581-2	96214	TERMINAL STRIP, GROUNDING	EA	1
2	13	PARZ	5935-497-0930	REPCSGF21ABR	97954	CONNECTOR, PLUG, ELECTRICAL	EA	1
2	14	PARZ	5935-497-0932	REPCSGF21ACL	97954	CONNECTOR, PLUG, ELECTRICAL	EA	1
2	15	PARZ	5935-497-0932	REPCSGF21ACM	97954	CONNECTOR, PLUG, ELECTRICAL	EA	1
2	16	PARZ	5940-983-6055	37TB14	81349	TERMINAL BOARD	EA	1
2	17	PARZ	5935-497-0933	REPCSGF21ACN	97954	CONNECTOR, PLUG, ELECTRICAL	EA	1
2	18	PARZ	5935-689-1885	REPCSGF21ACK	97954	CONNECTOR, PLUG, ELECTRICAL	EA	1
2	19	PARZ	5930-118-8067	538025-3	96214	SWITCH, ROTARY	EA	1
2	20	PARZ	5930-793-4977	MS35059-23	96906	SWITCH, TOGGLE	EA	1
2	21	PARZ	5930-105-1997	538025-1	96214	SWITCH, ROTARY	EA	1
2	22	PADZ	5940-905-4516	SE209D01	81349	TERMINAL, STUD	EA	4
2	23	PADZ	5961-762-0201	UT4020	12959	SEMICONDUCTOR DEVICE, DIODE	EA	1
2	24	PARZ	5930-655-1513	MS35058-21	96906	SWITCH, ROTARY	EA	1
2	25	PARZ	5905-539-2574	RV4SAYS104A	81349	RESISTOR, VARIABLE	EA	1
2	26	PARZ	5905-581-0447	RV4SAYS102A	81349	RESISTOR, VARIABLE	EA	3
2	27	PARZ		WTB24PD9J391	81349	CONNECTOR, RECEPTACLE, ELECTRICAL	EA	10
2	28	PARZ	5930-451-4197	538025-4	96214	SWITCH, ROTARY	EA	1
2	29	PARZ	5945-068-3927	KJ2A006	35344	RELAY, ARMATURE	EA	3
2	30	PARZ	5950-493-9397	636229-1	96214	TRANSFORMER, POWER THREE PHASE	EA	1
2	31	PARZ	5905-483-0355	RW78U8872F	81349	RESISTOR, FIXED, WIREWOUND	EA	1
2	32	PAHDD	6625-403-1086	692355-1	96214	GENERATOR, VIDEO	EA	1
2	33	PAHDD	6625-196-2857	692418-1	96214	PROCESSOR, VIDEO	EA	1
2	34	PAHDD	6625-403-1081	692358-1	96214	CIRCUITS, MISCELLANEOUS	EA	1
2	35	PAHDD	6625-409-8160	692367-1	96214	CONTROL, POWER INPUT	EA	1
2	36	PARZ	5945-490-5199	GSE22-501-0013	24727	RELAY, DETECTOR, PHASE SEQUENCE	EA	1
2	37	PAHDD	6130-433-2346	725126-1	96214	POWER SUPPLY, +15 VDC	EA	1
2	38	PARZ	6130-433-2345	725081-1	96214	POWER SUPPLY, -15 VDC	EA	1

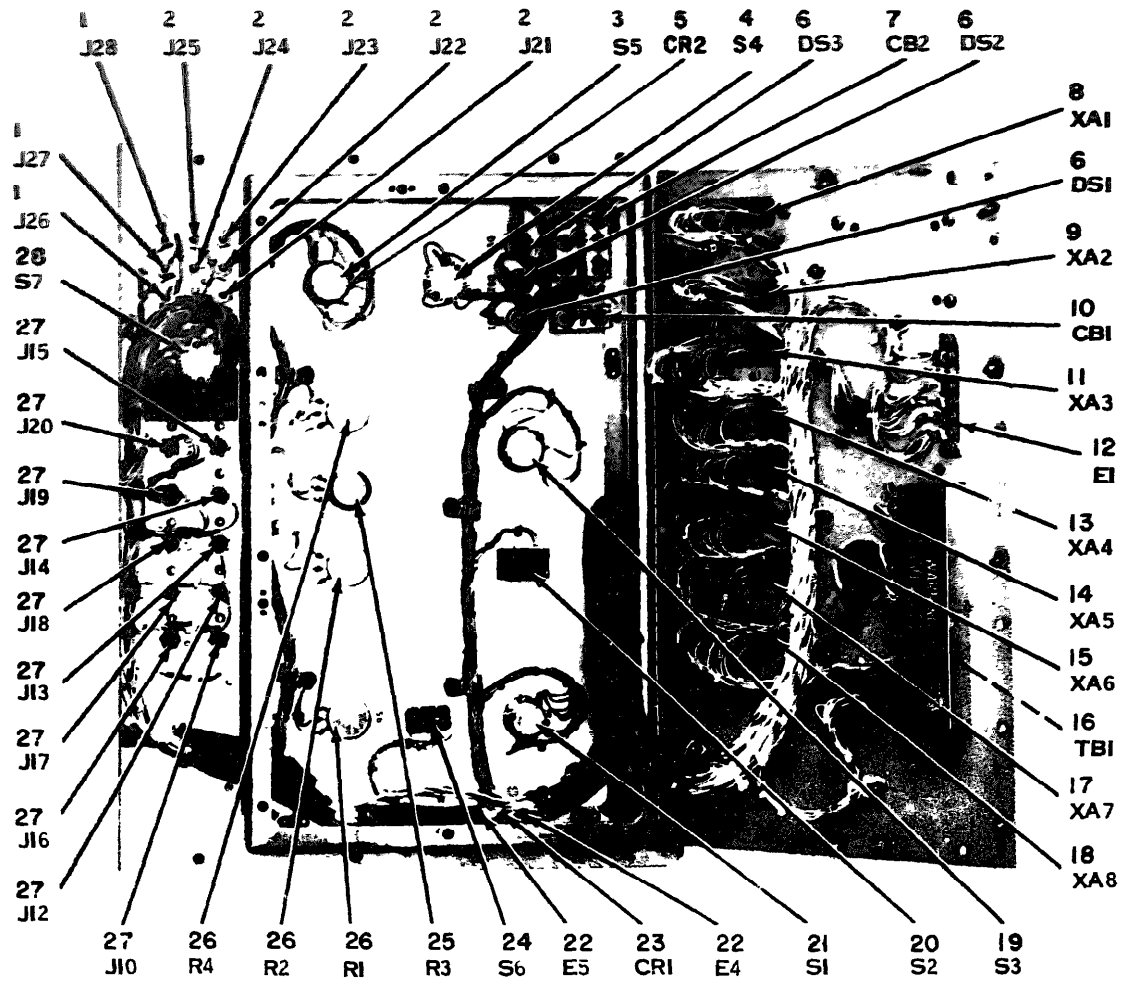


EL6625-1826-40P-TM-1

Figure 1 Test Set, Terrain-Calibration Indicator AN/AAM-33

SECTION II REPAIR PARTS LIST (CONTINUED)

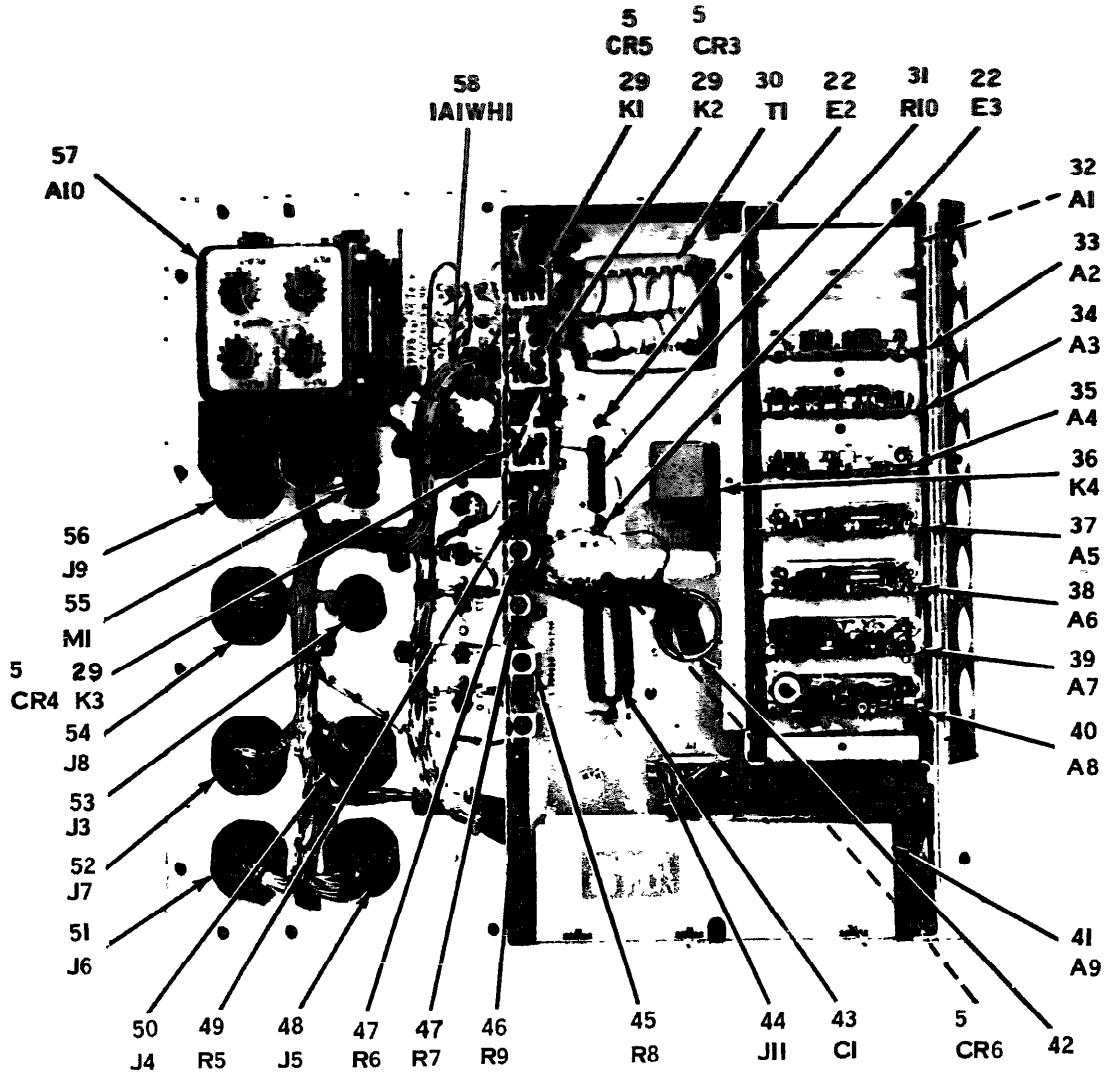
(1) ILLUSTRATION		(2) SNR CODE	(3) FEDERAL STOCK NUMBER	(4) PART NUMBER	(5) FROM	(6) DESCRIPTION	(7) UNIT OF MEAS	(8) QTY IN UNIT
(A) FIG. NO.	(B) ITEM NO.							
2	39	FAEDD	6130-480-2244	725084-1	96214	POWER SUPPLY, INTEGRATED CIRCUIT	EA	1
2	40	FAEDD	6625-606-5255	682069-1	96214	POWER SUPPLY, REGULATED, 150/250 VDC	EA	1
2	41	FAEDD	6625-623-1984	695891-1	96214	HEAT SINK ASSEMBLY	EA	1
2	42	FAEDD	5325-576-8497	845597-200	80205	GUMMET, SPLIT, PLASTIC	EA	1
2	43	FAEDD	5910-139-9751	2609055254	56289	CAPACITOR, FIXED, METALLIZED	EA	1
2	44	FAEDD	5935-410-9250	MC4308-2-3	81349	CONNECTOR, RECEPTACLE, ELECTRICAL	EA	1
2	45	FAEDD	5905-899-3111	RE7508061	81349	RESISTOR, FIXED, WIREWOUND	EA	1
2	46	FAEDD	5905-225-9756	RE7501872	81349	RESISTOR, FIXED, WIREWOUND	EA	1
2	47	FAEDD	5905-883-9168	RE7001212	81349	RESISTOR, FIXED, WIREWOUND	EA	2
2	48	FAEDD	5935-725-4496	MS3124E22-55S	96906	CONNECTOR, RECEPTACLE, ELECTRICAL	EA	1
2	49	FAEDD	5905-969-6801	RE600758D	81349	RESISTOR, FIXED, WIREWOUND	EA	1
2	50	FAEDD	5935-784-5968	MS3124E20-41S	96906	CONNECTOR, RECEPTACLE, ELECTRICAL	EA	1
2	51	PAHZZ	5935-689-1876	L22TE95S4X1	09922	CONNECTOR BODY, RECEPTACLE, ELECTRICAL	EA	1
2	52	PAHZZ	5935-689-1375	L22TE95P4Y1	09922	CONNECTOR BODY, RECEPTACLE, ELECTRICAL	EA	1
2	53	PAHZZ	5935-912-7825	MS3124E12-10S	96906	CONNECTOR, RECEPTACLE, ELECTRICAL	EA	1
2	54	PAHZZ	5935-878-1828	L22TE19S4N1	09922	CONNECTOR BODY, RECEPTACLE, ELECTRICAL	EA	1
2	55	PAHZZ	6645-470-4305	519699-2	96214	METER, TIME TOTALIZING MODIFIED	EA	1
2	56	PAHZZ	5935-969-8030	MS3124E20-41SW	96906	CONNECTOR, RECEPTACLE, ELECTRICAL	EA	1
2	57	PAHDD	5915-194-4876	694753-3	96214	FILTER ASSEMBLY	EA	1
2	58	AHJHH		696197-1	96214	WIRING HARNESS	EA	1
2	59	PAOZZ	5355-985-6888	MS91528-2M2B	96906	KNOB, CONTROL	EA	5
2	60	PAOZZ	5355-616-7669	MS91528-2D2B	96906	KNOB, CONTROL	EA	4
2	61	PAHZZ	6210-482-3870	08-83283-81	87034	LAMPHOLDER	EA	1
2	62	PAHZZ	6210-482-3871	08-83283-82	87034	LAMPHOLDER	EA	1
2	63	PAHZZ	6210-482-3872	08-83283-83	87034	LAMPHOLDER	EA	1
GROUP 1A1A1 GENERATOR VIDEO								
3	1	PADZZ	5910-010-8718	CK06BX103K	81349	CAPACITOR, FIXED, CERAMIC DIELECTRIC	EA	19
3	2	PADZZ	5910-713-4309	CM05ED680J03	81349	CAPACITOR, FIXED, MICA DIELECTRIC	EA	1
3	3	PADZZ	5910-490-0397	CM05ED470J03	81349	CAPACITOR, FIXED, MICA DIELECTRIC	EA	1
3	4	PADZZ	5910-124-4383	CSR13F226KL	81349	CAPACITOR, FIXED, ELECTROLYTIC	EA	3
3	5	PADZZ	5961-995-2310	1N752A	81349	SEMICONDUCTOR DEVICE, DIODE	EA	2
3	6	PADZZ	5999-484-5513	7717-18N	13103	INSULATOR, DISK	EA	3
3	7	PADZZ	5935-433-2452	418354-1	96214	SOCKET, CRYSTAL	EA	1
3	8	PADZZ	5935-131-9696	M39024-11-04	81349	JACK, TIP	EA	1
3	9	PADZZ	5950-233-6853	MS90542-11	96906	COIL, RADIO FREQUENCY	EA	3
3	10	PADZZ		UPCCSQ123AABL	97954	CONNECTOR, RECEPTACLE, ELECTRICAL	EA	1
3	11	PADZZ	5961-951-8757	2N2222A	81349	TRANSISTOR	EA	3
3	12	PADZZ	5905-025-5988	RN60D3321F	81349	RESISTOR, FIXED, FILM	EA	1
3	13	PADZZ	5905-721-2885	RN60D3322F	81349	RESISTOR, FIXED, FILM	EA	1
3	14	PADZZ	5905-142-0901	RN60D3010F	81349	RESISTOR, FIXED, FILM	EA	10
3	15	PADZZ	5905-233-4573	RW70U1R10F	81349	RESISTOR, FIXED, WIREWOUND	EA	1
3	16	PADZZ	5905-432-6410	RN60D1001F	81349	RESISTOR, FIXED, FILM	EA	4
3	17	PADZZ	5905-988-2310	RN60D1000F	81349	RESISTOR, FIXED, FILM	EA	2



NOTE -
 PREFIX ALL REFERENCE DESIGNATORS WITH IAI.

EL6625 -1826-40P-TM-2 (1)

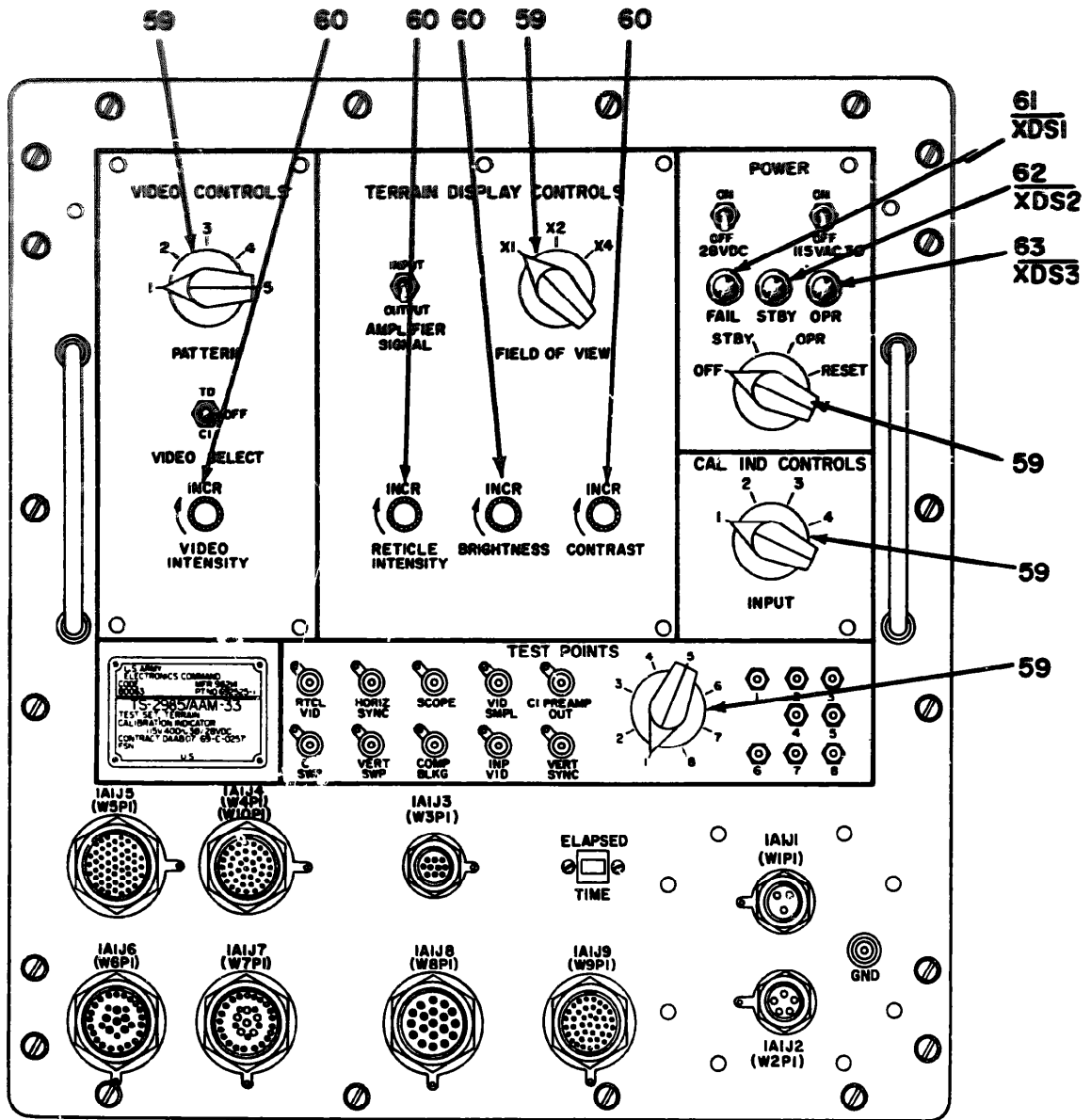
Figure 2(1) Control unit (Sheet 1 of 3)



NOTE —
 PREFIX ALL REFERENCE DESIGNATORS WITH IAI.

EL6625-1826-40P-TM-2 (2)

Figure 2② Control unit (sheet 2 of 3)

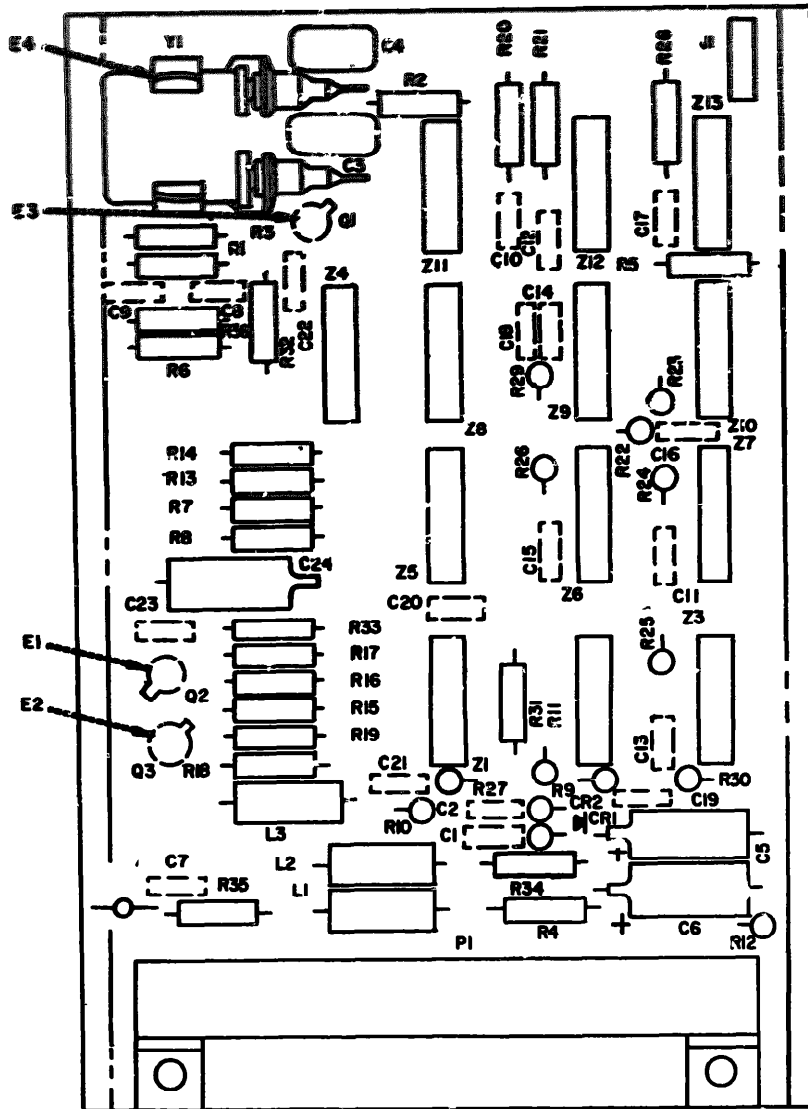


EL 6625-1826-40P-TM-2 (3)

Figure 2 (3) Control unit (Sheet 3 of 3)

SECTION II REPAIR PARTS LIST (CONTINUED)

(1) ILLUSTRATION		(2) PART NUMBER	(3) FEDERAL STOCK NUMBER	(4) PART NUMBER	(5) FROM	(6) DESCRIPTION	(7) USABLE ON CODE	(8) UNIT OF MEAS	(9) QTY OR UNIT
(A) FIG NO.	(B) ITEM NO.								
3	18	PAZZ	5905-233-7141	RN60D741F	81349	RESISTOR, FIXED, FILM		EA	1
3	19	PAZZ	5905-998-2309	RN60D100F	81349	RESISTOR, FIXED, FILM		EA	13
3	20	PAZZ	5905-957-8633	RN60D511F	81349	RESISTOR, FIXED, FILM		EA	2
3	21	PAZZ	5955-951-8961	CR19M10-000MZ	81349	CRYSTAL UNIT, QUARTZ		EA	1
3	22	PAZZ	5962-193-7444	SN5400N	01295	INTEGRATED CIRCUIT, INPUT GATE		EA	3
3	23	PAZZ	5962-245-1608	SN5430N	01295	INTEGRATED CIRCUIT, INPUT GATE		EA	3
3	24	PAZZ	5962-247-3394	SN5490N	01295	INTEGRATED CIRCUIT, DECADE CENTER		EA	5
3	25	PAZZ	5962-245-1613	SN5420N	01295	INTEGRATED CIRCUIT, INPUT GATE		EA	1
3	26	PAZZ	5962-245-1616	SN5473N	01295	INTEGRATED CIRCUIT, FLIP FLOP		EA	1
GROUP: LALAZ PROCESSOR VIDEO									
4	1	PAZZ	5910-124-4383	CSR13F226KL	81349	CAPACITOR, FIXED, ELECTROLYTIC		EA	2
4	2	PAZZ	5910-495-0042	CSR13G109KL	81349	CAPACITOR, FIXED, ELECTROLYTIC		EA	2
4	3	PAZZ	5910-899-9004	CSR13D157KL	81349	CAPACITOR, FIXED, ELECTROLYTIC		EA	1
4	4	PAZZ	5910-010-8666	CK05BK102K	81349	CAPACITOR, FIXED, CERAMIC DIELECTRIC		EA	5
4	5	PAZZ	5910-456-0812	CM06FD511J03	81349	CAPACITOR, FIXED, MICA DIELECTRIC		EA	1
4	6	PAZZ	5961-846-9157	1N759A	81349	SEMICONDUCTOR DEVICE, DIODE		EA	1
4	7	PAZZ	5961-752-6121	1N753A	81349	SEMICONDUCTOR DEVICE, DIODE		EA	1
4	8	PAZZ	5961-087-6047	1N645	81349	SEMICONDUCTOR DEVICE, DIODE		EA	2
4	9	PAZZ	5999-919-4224	7717-44H	13103	INSULATOR, DISK		EA	3
4	10	XBZZ	5961-951-5474	10105DAP	07047	INSULATOR, PLATE		EA	2
4	11	PAZZ	5961-054-0339	7717-19DAP	13103	INSULATOR, DISK		EA	1
4	12	PAZZ	5935-131-9696	M39024-11-04	81349	JACK, TIP		EA	1
4	13	PAZZ	5945-406-3026	EAL1A124	35344	RELAY, ARMATURE		EA	2
4	14	PAZZ	5960-931-3744	MS90542-21	96906	COIL, RADIO FREQUENCY		EA	2
4	15	PAZZ	5961-871-9538	NF207	05820	HEAT SINK, SEMICONDUCTOR DEVICE		EA	2
4	16	PAZZ	5935-689-1884	UPCCSGM23AAEL	97954	CONNECTOR, RECEPTACLE, ELECTRICAL		EA	1
4	17	PAZZ	5961-890-9867	2N4856	81349	TRANSISTOR		EA	1
4	18	PAZZ	5961-050-7499	2N2219A	81349	TRANSISTOR		EA	1
4	19	PAZZ	5961-949-1440	2N2905A	81349	TRANSISTOR		EA	1
4	20	PAZZ	5905-489-2159	RT24C2P103	81349	RESISTOR, VARIABLE		EA	2
4	21	PAZZ	5905-988-2309	RN60D100F	81349	RESISTOR, FIXED, FILM		EA	2
4	22	PAZZ	5905-099-0545	RN60D1820F	81349	RESISTOR, FIXED, FILM		EA	1
4	23	PAZZ	5905-957-8633	RN60D51R1F	81349	RESISTOR, FIXED, FILM		EA	1
4	24	PAZZ	5905-142-0932	RN60D5111F	81349	RESISTOR, FIXED, FILM		EA	2
4	25	PAZZ	5905-142-0901	RN60D200CF	81349	RESISTOR, FIXED, FILM		EA	1
4	26	PAZZ	5905-189-2467	RN60D3011F	81349	RESISTOR, FIXED, FILM		EA	1
4	27	PAZZ	5905-983-6914	RN60D1002F	81349	RESISTOR, FIXED, FILM		EA	1
4	28	PAZZ	5905-069-3913	RN60D2740F	81349	RESISTOR, FIXED, FILM		EA	1
4	29	PAZZ	5905-112-7056	RN60D5620F	81349	RESISTOR, FIXED, FILM		EA	1
4	30	PAZZ	5905-957-7108	RN65D22R1F	81349	RESISTOR, FIXED, FILM		EA	2
4	31	PAZZ	5905-233-7141	RN60D741F	81349	RESISTOR, FIXED, FILM		EA	1
4	32	PAZZ	5905-137-0804	RN60D1003F	81349	RESISTOR, FIXED, FILM		EA	1



REF. DES.	ITEM NO.	REF. DES.	ITEM NO.	REF. DES.	ITEM NO.	REF. DES.	ITEM NO.	REF. DES.	ITEM NO.
1	1	1	1	1	1	1	1	1	1
2	2	2	2	2	2	2	2	2	2
3	3	3	3	3	3	3	3	3	3
4	4	4	4	4	4	4	4	4	4
5	5	5	5	5	5	5	5	5	5
6	6	6	6	6	6	6	6	6	6
7	7	7	7	7	7	7	7	7	7
8	8	8	8	8	8	8	8	8	8
9	9	9	9	9	9	9	9	9	9
10	10	10	10	10	10	10	10	10	10
11	11	11	11	11	11	11	11	11	11
12	12	12	12	12	12	12	12	12	12
13	13	13	13	13	13	13	13	13	13
14	14	14	14	14	14	14	14	14	14
15	15	15	15	15	15	15	15	15	15
16	16	16	16	16	16	16	16	16	16
17	17	17	17	17	17	17	17	17	17
18	18	18	18	18	18	18	18	18	18
19	19	19	19	19	19	19	19	19	19
20	20	20	20	20	20	20	20	20	20
21	21	21	21	21	21	21	21	21	21
22	22	22	22	22	22	22	22	22	22
23	23	23	23	23	23	23	23	23	23
24	24	24	24	24	24	24	24	24	24
25	25	25	25	25	25	25	25	25	25
26	26	26	26	26	26	26	26	26	26
27	27	27	27	27	27	27	27	27	27
28	28	28	28	28	28	28	28	28	28
29	29	29	29	29	29	29	29	29	29
30	30	30	30	30	30	30	30	30	30
31	31	31	31	31	31	31	31	31	31
32	32	32	32	32	32	32	32	32	32
33	33	33	33	33	33	33	33	33	33
34	34	34	34	34	34	34	34	34	34
35	35	35	35	35	35	35	35	35	35

LEGEND

BASING DIAGRAMS ARE SHOWN FROM THE TOP AS ON THE PART LOCATION DIAGRAM.

TRANSISTOR (Q)

INTEGRATED CIRCUIT
14-PIN DUAL-INLINE (Z)

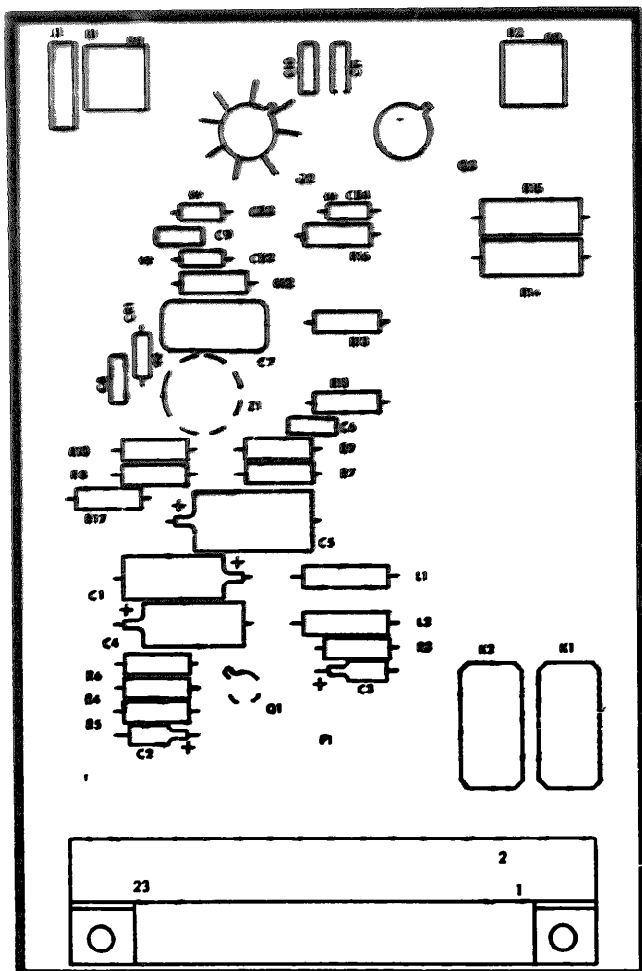
- NOTES:
- FOR COMPLETE REFERENCE DESIGNATION PREFIX WITH |A|A|.
 - ITEM 6 ARE INSULATOR DISKS UNDER Q1,2,3.
 - ITEM 7 IS A SOCKET UNDER Y1.

EL6625-1826-40P-TM-3

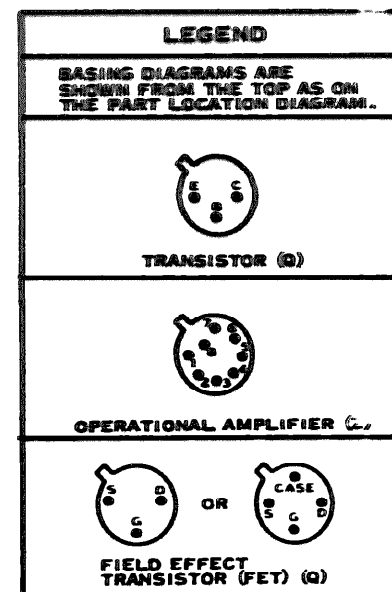
Figure 3 Generator video

SECTION II REPAIR PARTS LIST (CONTINUED)

(1) ILLUSTRATION		(2) FEDERAL STOCK NUMBER	(3) PART NUMBER	(4) FIGURE	(5) DESCRIPTION	(6) UNIT OF MEASUREMENT	(7) QTY PER UNIT
(A) PAGE NO.	(B) ITEM NO.						
1	35	PADZZ 5962-245-5325	5N52762L	01295	INTEGRATED CIRCUIT, OPERATIONAL AMPLIFIER GROUP: TABA3 MISCELLANEOUS CIRCUITS	EA	1
9	2	PADZZ 5910-010-8782	CM06FD62LJ03	81349	CAPACITOR, FIXED, CERAMIC DIELECTRIC	EA	1
9	2	PADZZ 5910-051-9794	CM06FD62LJ03	81349	CAPACITOR, FIXED, MICA DIELECTRIC	EA	1
9	3	PADZZ 5910-460-0869	CM06FD62LJ03	81349	CAPACITOR, FIXED, MICA DIELECTRIC	EA	1
9	4	PADZZ 5910-124-4383	CSM13F276KL	81349	CAPACITOR, FIXED, ELECTROLYTIC	EA	1
9	5	PADZZ 5910-983-1267	CM06FD47LJ03	81349	CAPACITOR, FIXED, CERAMIC DIELECTRIC	EA	1
9	6	PADZZ 5910-460-0852	CM06FD47LJ03	81349	CAPACITOR, FIXED, MICA DIELECTRIC	EA	1
9	7	PADZZ 5910-781-1154	CM06FD152J03	81349	CAPACITOR, FIXED, MICA DIELECTRIC	EA	1
9	8	PADZZ 5910-450-5239	LP9A1A104J	01884	CAPACITOR, FIXED, PLASTIC DIELECTRIC	EA	1
9	9	PADZZ 5910-707-5362	CM06FD91LJ03	81349	CAPACITOR, FIXED, MICA DIELECTRIC	EA	1
9	10	PADZZ 5910-176-7335	CM06FD152J03	81349	CAPACITOR, FIXED, MICA DIELECTRIC	EA	1
9	11	PADZZ 5910-490-0397	CM06ED470J03	81349	CAPACITOR, FIXED, MICA DIELECTRIC	EA	1
9	12	PADZZ 5910-728-4093	CM06FD182J03	81349	CAPACITOR, FIXED, MICA DIELECTRIC	EA	1
9	13	PADZZ 5910-010-8668	CM06FD102J	81349	CAPACITOR, FIXED, CERAMIC DIELECTRIC	EA	1
9	14	PADZZ 5910-154-0547	CSM13F276KL	81349	CAPACITOR, FIXED, ELECTROLYTIC	EA	1
9	15	PADZZ 5910-453-8796	CM06FD182J03	81349	CAPACITOR, FIXED, MICA DIELECTRIC	EA	1
9	16	PADZZ 5961-842-9864	1N914	81349	SEMICONDUCTOR DEVICE, DIODE	EA	4
9	17	PADZZ 5961-847-5246	1N746A	81349	SEMICONDUCTOR DEVICE, DIODE	EA	1
9	18	PADZZ 5961-821-2309	1N751A	81349	SEMICONDUCTOR DEVICE, DIODE	EA	1
9	19	PADZZ 5961-892-0889	1N938B	81349	SEMICONDUCTOR DEVICE, DIODE	EA	1
9	20	PADZZ 5961-087-6047	1N645	81349	SEMICONDUCTOR DEVICE, DIODE	EA	2
9	21	PADZZ 5999-484-5513	7717-18N	13103	INSULATOR, DISK	EA	20
9	22	PADZZ 5999-919-4224	7717-44N	13103	INSULATOR, DISK	EA	2
9	23	PADZZ 5935-131-9696	M39024-11-04	81349	JACK, TIP	EA	1
9	24	PADZZ 5935-131-9681	M39024-11-02	81349	JACK, TIP	EA	1
9	25	PADZZ 5935-131-9726	M39024-11-06	81349	JACK, TIP	EA	1
9	26	PADZZ 5935-131-9728	M39024-11-08	81349	JACK, TIP	EA	1
9	27	PADZZ 5950-931-3744	MS90542-21	96906	COIL, RADIO FREQUENCY	EA	7
9	28	PADZZ 5935-639-1887	HPCCSCE3A88H	97974	CONNECTOR, RECEPTACLE, ELECTRICAL	EA	1
9	29	PADZZ 5961-951-8757	2N2222A	81349	TRANSISTOR	EA	14
9	30	PADZZ 5961-949-6562	2N2432	81349	TRANSISTOR	EA	1
9	31	PADZZ 5961-925-5777	2N2907A	81349	TRANSISTOR	EA	2
9	32	PADZZ 5961-226-8579	2N930	81349	TRANSISTOR	EA	3
9	33	PADZZ 5961-050-7499	2N2219A	81349	TRANSISTOR	EA	1
9	34	PADZZ 5961-949-1440	2N2905A	81349	TRANSISTOR	EA	1
9	35	PADZZ 5905-983-6914	RN60D1002F	81349	RESISTOR, FIXED, FILM	EA	3
9	36	PADZZ 5905-758-4840	RN60D1501F	81349	RESISTOR, FIXED, FILM	EA	1
9	37	PADZZ 5905-432-6410	RN60D1001F	81349	RESISTOR, FIXED, FILM	EA	9
9	38	PADZZ 5905-214-2927	RN60D5110F	81349	RESISTOR, FIXED, FILM	EA	3
9	39	PADZZ 5950-189-2467	RN60E3011F	81349	RESISTOR, FIXED, FILM	EA	2
9	40	PADZZ 5905-208-3800	RN60D4752F	81349	RESISTOR, FIXED, FILM	EA	1



REF. DES.	ITEM NO.	REF. DES.	ITEM NO.
C1	1	L2	14
C2	2	MP1	15
C3	2	P1	16
C4	1	Q1	17
C5	3	Q2	18
C6	4	Q3	19
C7	5	R1	20
C8	4	R2	20
C9	4	R3	21
C10	4	R4	22
C11	4	R5	21
CR1	6	R6	23
CR2	7	R7	24
CR3	8	R8	24
CR4	8	R9	25
E1	9	R10	26
E2	9	R11	27
E3	9	R12	28
E4	10	R13	29
E5	10	R14	30
E6	11	R15	30
J1	12	R16	31
K1	13	R17	32
K2	13	Z1	33
L1	14		


NOTES:

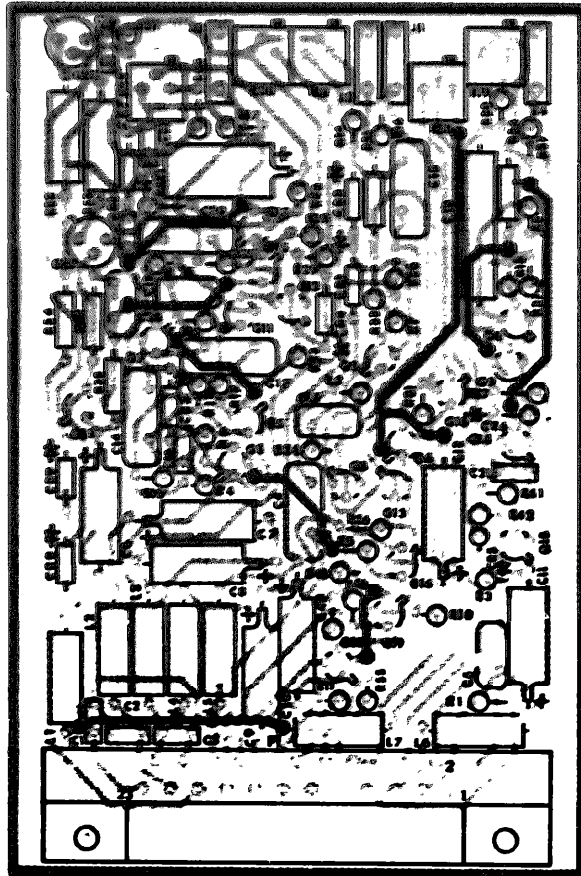
1. BASING DIAGRAMS FOR RELAYS ARE ILLUSTRATED ON THE RELAY CASE.
2. LIGHT SHADING INDICATES ETCHED SIDE CIRCUIT PATTERN—DARK SHADING INDICATES COMPONENT SIDE PATTERN.
3. FOR COMPLETE REFERENCE DESIGNATION PREFIX WITH 1A1A2
4. E1, E2, E3 FIT UNDER Q1, Q2, Q3
E4, E5 FIT UNDER K1, K2
E6, FITS UNDER Z1
5. ITEM 15 ARE HEATSINKS LOCATED UNDER Q2, Q3.

EL 6625-1826-40P-TM-4

Figure 4 Processor video

SECTION II REPAIR PARTS LIST (CONTINUED)

(1) ILLUSTRATION		(2) PART CODE	(3) FEDERAL STOCK NUMBER	(4) PART NUMBER	(5) FIGURE	(6) DESCRIPTION	(7) USABLE QUANTITY	(8) UNIT OF MEASURE
(A) FIG. NO.	(B) FIG. NO.							
5	41	PADZZ	5905-137-0804	RM60D10W1F	81349	RESISTOR, FIXED, FILM	EA	5
5	42	PADZZ	5905-194-1695	RM60D4751F	81349	RESISTOR, FIXED, FILM	EA	6
5	43	PADZZ	5905-192-3479	RM60D9091F	81349	RESISTOR, FIXED, FILM	EA	2
5	44	PADZZ	5905-147-2062	RM60D2212F	81349	RESISTOR, FIXED, FILM	EA	2
5	45	PADZZ	5905-142-0932	RM60D5111F	81349	RESISTOR, FIXED, FILM	EA	1
5	46	PADZZ	5905-489-2159	RT24C2P103	81349	RESISTOR, VARIABLE	EA	3
5	47	PADZZ	5905-985-5844	RM55C2212F	81349	RESISTOR, FIXED, FILM	EA	1
5	48	PADZZ	5905-721-2387	RM60D6190F	81349	RESISTOR, FIXED, FILM	EA	2
5	49	PADZZ	5905-062-0151	RM60D1622F	81349	RESISTOR, FIXED, FILM	EA	2
5	50	PADZZ	5905-195-6404	RM60D3922F	81349	RESISTOR, FIXED, FILM	EA	1
5	51	PADZZ	5905-079-6336	RT24C2P102	81349	RESISTOR, VARIABLE	EA	2
5	52	PADZZ	5905-452-0768	RM60D6191F	49	RESISTOR, FIXED, FILM	EA	1
5	53	PADZZ	5905-189-2484	RM60D7502F	81349	RESISTOR, FIXED, FILM	EA	1
5	54	PADZZ	5905-211-0230	RM60D2211F	81349	RESISTOR, FIXED, FILM	EA	1
5	55	PADZZ	5905-006-6988	RM60D7501F	81349	RESISTOR, FIXED, FILM	EA	1
5	56	PADZZ	5905-681-3628	RM65D10R0F	81349	RESISTOR, FIXED, FILM	EA	2
5	57	PADZZ	5905-957-8633	RM60D51R1F	81349	RESISTOR, FIXED, FILM	EA	1
5	58	PADZZ	5905-058-1770	RM60D1472F	81349	RESISTOR, FIXED, FILM	EA	1
						GROUP: 1A1A4 CONTROL POWER INPUT		
6	1	PADZZ	5910-936-1332	CSR13F685KL	81349	CAPACITOR, FIXED, ELECTROLYTIC	EA	2
6	2	PADZZ	5910-010-8718	CK06BX103K	81349	CAPACITOR, FIXED, CERAMIC DIELECTRIC	EA	2
6	3	PADZZ	5910-495-0042	CSR13G105KL	81349	CAPACITOR, FIXED, ELECTROLYTIC	EA	1
6	4	PADZZ	5910-983-1157	CK06BX472K	81349	CAPACITOR, FIXED, CERAMIC DIELECTRIC	EA	1
6	5	PADZZ	5910-453-8796	CM05FD181J03	81349	CAPACITOR, FIXED, MICA DIELECTRIC	EA	1
6	6	PADZZ	5961-894-0684	1N758A	81349	SEMICONDUCTOR DEVICE, DIODE	EA	1
6	7	PADZZ	5961-950-9887	1N827	81349	SEMICONDUCTOR DEVICE, DIODE	EA	1
6	8	PADZZ	5961-842-9864	1N914	81349	SEMICONDUCTOR DEVICE, DIODE	EA	2
6	9	PADZZ	5999-919-4224	7717-44N	13103	INSULATOR, DISK	EA	2
6	10	PADZZ	5961-054-0339	7717-19DAP	13103	INSULATOR, DISK	EA	3
6	11	XBDZZ	5961-951-5474	10105-DAP	07047	INSULATOR, PLATE	EA	2
6	12	PADZZ	5935-131-9696	M39024-11-04	81349	JACK, TIP	EA	1
6	13	PADZZ	5935-131-9681	M39024-11-02	81349	JACK, TIP	EA	1
6	14	PADZZ	5935-131-9726	M39024-11-06	81349	JACK, TIP	EA	1
6	15	PADZZ	5945-478-7662	EA1B131	35344	RELAY, ARMATURE	EA	1
6	16	PADZZ	5945-406-3026	EA1A124	35344	RELAY, ARMATURE	EA	1
6	17	PADZZ		UPCCSGM23AABR	97954	CONNECTOR, RECEPTACLE, ELECTRICAL	EA	1
6	18	PADZZ	5961-951-8757	2N2222A	81349	TRANSISTOR	EA	2
6	19	PADZZ	5905-496-5253	RM65F2430F	81349	RESISTOR, FIXED, FILM	EA	1
6	20	PADZZ	5905-926-8630	RL32S240J	81349	RESISTOR, FIXED, FILM	EA	2
6	21	PADZZ	5905-004-6103	RM65C3830F	81349	RESISTOR, FIXED, FILM	EA	1
6	22	PADZZ	5905-153-0135	RM55C1212F	81349	RESISTOR, FIXED, FILM	EA	2
6	23	PADZZ	5905-477-9176	RM55C2001F	81349	RESISTOR, FIXED, FILM	EA	1



REF. DES.	ITEM NO.	REF. DES.	ITEM NO.	REF. DES.	ITEM NO.	REF. DES.	ITEM NO.	REF. DES.	ITEM NO.
C1	1	C26	13	E16	21	Q8	29	R11	41
C2	1	C21	16	E17	21	Q9	30	R12	38
C3	1	C22	16	E18	21	Q10	29	R13	42
C4	2	C23	16	E19	21	Q11	31	R14	43
C5	3	C24	17	E20	21	Q12	32	R15	44
C6	4	C25	16	E21	22	Q13	29	R16	41
C7	4	C26	18	E22	22	Q14	29	R17	45
C8	4	C27	19	J1	23	Q15	32	R18	46
C9	4	C28	20	J2	24	Q16	29	R19	46
C10	4	C29	20	J3	25	Q17	32	R20	47
C11	4	E1	21	J4	26	Q18	29	R21	42
C12	4	E2	21	L1	27	Q19	29	R22	38
C13	5	E3	21	L2	27	Q20	29	R23	48
C14	6	E4	21	L3	27	Q21	31	R24	49
C15	7	E5	21	L4	27	Q22	33	R25	50
C16	8	E6	21	L5	27	Q23	34	R26	37
C17	9	E7	21	L6	27	R1	35	R27	39
C18	10	E8	21	L7	27	R2	36	R28	31
C19	11	E9	21	P1	28	R3	37	R29	44
C20	12	E10	21	Q1	29	R4	38	R30	46
C21	13	E11	21	Q3	29	R5	37	R31	41
C22	14	E12	21	Q4	29	R6	37	R32	49
C23	13	E13	21	Q5	29	R7	37	R33	37
C24	15	E14	21	Q6	29	R8	39	R34	43
C25	13	E15	21	Q7	29	R10	40	R35	41

LEGEND

BASING DIAGRAMS ARE SHOWN FROM THE TOP AS ON THE PART LOCATION DIAGRAM.



TRANSISTOR (Q)

NOTES:

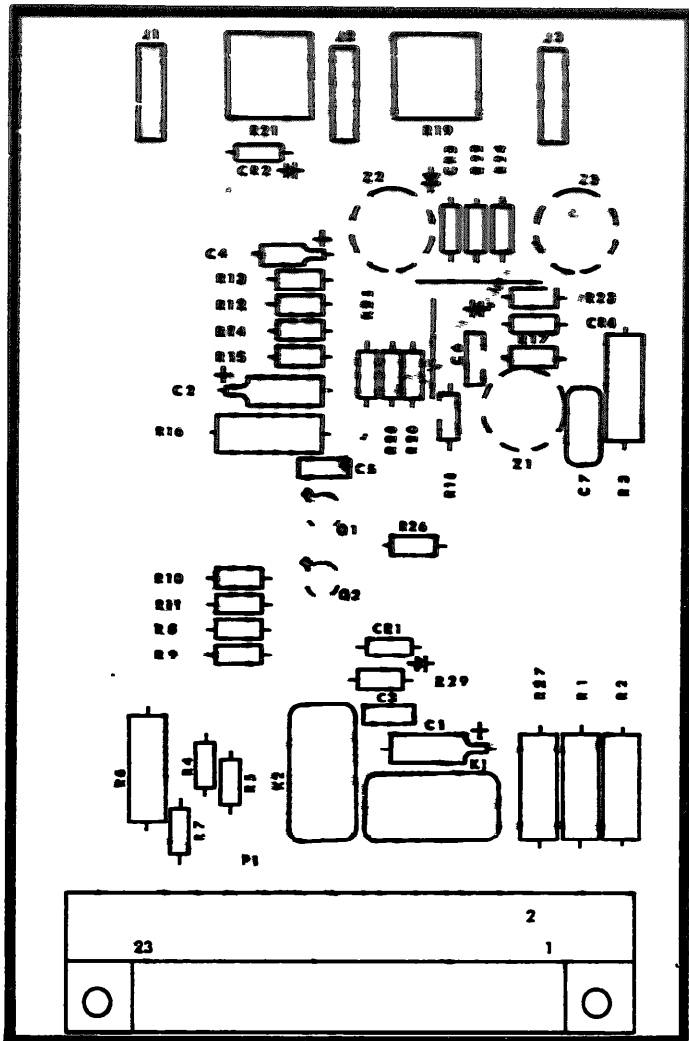
1. LIGHT SHADING INDICATES ETCHED SIDE CIRCUIT PATTERN—DARK SHADING INDICATES COMPONENT SIDE PATTERN.
2. FOR COMPLETE REFERENCE DESIGNATION PREFIX WITH 1A1A3
3. INSTALL ITEM 21 UNDER ITEMS 29, 30, 31, & 32
4. INSTALL ITEM 22 UNDER ITEMS 33, 34.

EL6625-1826-40P-TM-5

Figure 5 Miscellaneous circuits

SECTION II REPAIR PARTS LIST (CONTINUED)

(1) QUANTITY		(2) UNIT CODE	(3) FEDERAL STOCK NUMBER	(4) PART NUMBER	(5) PART FIGURE	(6) DESCRIPTION	(7) UNIT OF MEASURE	(8) QTY PER UNIT
(A) REQ NO.	(B) ITEM NO.							
6	24	PADZZ	5905-025-5984	RM55C147F	81349	RESISTOR, FIXED, FILM	EA	1
6	25	PADZZ	5905-112-1233	RM55C201F	81349	RESISTOR, FIXED, FILM	EA	5
6	26	PADZZ	5905-223-2741	RM55C1002F	81349	RESISTOR, FIXED, FILM	EA	9
6	27	PADZZ	5905-480-5196	RM55C1501F	81349	RESISTOR, FIXED, FILM	EA	1
6	28	PADZZ	5905-067-7338	RT22C2P502	81349	RESISTOR, VARIABLE, WIREWOUND	EA	2
6	29	PADZZ	5905-121-6327	RM55C4921F	81349	RESISTOR, FIXED, FILM	EA	1
6	30	PADZZ	5905-256-5051	RM55C5621F	81349	RESISTOR, FIXED, FILM	EA	1
6	31	PADZZ	5905-412-4049	RM55C4751F	81349	RESISTOR, FIXED, FILM	EA	1
6	32	PADZZ	5905-947-5641	RM55F2493F	81349	RESISTOR, FIXED, FILM	EA	1
6	33	PADZZ	5962-861-3220	SM52709L	01295	INTEGRATED CIRCUIT, OPERATIONAL AMPLIFIER GROUP: 1A1A5 POWER SUPPLY, +15 VDC	EA	3
7	1	PADZZ	5910-113-5540	CK15BK104K	81349	CAPACITOR, FIXED, CERAMIC DIELECTRIC	EA	7
7	2	PADZZ	5910-887-9874	CUL3CH3315F3	81349	CAPACITOR, FIXED, ELECTROLYTIC	EA	1
7	3	PADZZ	5910-460-0869	CM15FD221J03	81349	CAPACITOR, FIXED, MICA DIELECTRIC	EA	1
7	4	PADZZ	5910-010-8718	CK06BK102K	81349	CAPACITOR, FIXED, CERAMIC DIELECTRIC	EA	1
7	5	PADZZ	5910-165-2742	CL21EM0805PE	81349	CAPACITOR, FIXED, ELECTROLYTIC	EA	1
7	6	PADZZ	5961-762-0201	UT4020	12969	SEMICONDUCTOR DEVICE, DIODE	EA	6
7	7	PADZZ	5961-836-6667	1M816	81349	SEMICONDUCTOR DEVICE, DIODE	EA	2
7	8	PADZZ	5961-842-9864	1M914	81349	SEMICONDUCTOR DEVICE, DIODE	EA	2
7	9	PADZZ	5961-923-3940	1M825	81349	SEMICONDUCTOR DEVICE, DIODE	EA	1
7	10	PADZZ	5961-054-0339	7717-19DAP	13103	INSULATOR, DISK	EA	1
7	11	PADZZ	5999-484-5513	7717-16N	13103	INSULATOR, DISK	EA	2
7	12	PADZZ	5940-725-9498	SEL2XC07	81349	TERMINAL, STUD	EA	12
7	13	PADZZ	5935-131-9696	M39024-11-04	81349	JACK, TIP	EA	1
7	14	PADZZ	5935-131-9681	M39024-11-02	81349	JACK, TIP	EA	1
7	15	PADZZ	5935-131-9726	M39024-11-06	81349	JACK, TIP	EA	1
7	16	PADZZ	5935-131-9693	M39024-11-03	81349	JACK, TIP	EA	1
7	17	PADZZ	5935-665-6099	UPCCSGM23AACL	97954	CONNECTOR, RECEPTACLE, ELECTRICAL	EA	1
7	18	PADZZ		2N2907	81349	TRANSISTOR	EA	1
7	19	PADZZ	5961-951-8757	2N2222A	81349	TRANSISTOR	EA	1
7	20	PADZZ	5905-432-6410	RN60D1001F	81349	RESISTOR, FIXED, FILM	EA	4
7	21	PADZZ		RN60D1002F	81349	RESISTOR, FIXED, FILM	EA	2
7	22	PADZZ	5905-750-2063	RN60D2210F	81349	RESISTOR, FIXED, FILM	EA	1
7	23	PADZZ		RN60D2001F	81349	RESISTOR, FIXED, FILM	EA	2
7	24	PADZZ	5905-763-9237	RW68VR33	81349	RESISTOR, FIXED, WIREWOUND	EA	1
7	25	PADZZ	5905-758-4840	RN60D1501F	81349	RESISTOR, FIXED, FILM	EA	1
7	26	PADZZ	5905-409-7252	RN60C2611F	81349	RESISTOR, FIXED, FILM	EA	1
7	27	PADZZ	5905-196-1020	RT24C2P501	81349	RESISTOR, VARIABLE	EA	1
7	28	PADZZ	5905-451-7518	RN60C1961F	81349	RESISTOR, FIXED, FILM	EA	1
7	29	PADZZ	5962-861-3220	SN52709L	01295	INTEGRATED CIRCUIT, OPERATIONAL AMPLIFIER GROUP: 1A1A6 POWER SUPPLY, -15 VDC	EA	1
8	1	PADZZ	5910-113-5540	CK15BK104K	81349	CAPACITOR, FIXED, CERAMIC DIELECTRIC	EA	7



NOTES:

1. BASING DIAGRAMS FOR RELAYS ARE ILLUSTRATED ON THE RELAY CASE.
2. LIGHT SHADING INDICATES ETCHED SIDE CIRCUIT PATTERN-DARK SHADING INDICATES COMPONENT SIDE PATTERN.
3. FOR COMPLETE REFERENCE DESIGNATION PREFIX WITH 1A1A4
4. INSULATOR DISK ITEM 9 MOUNT UNDER Q1 AND Q2. ITEM 10 MOUNT UNDER Z1, Z2 AND Z3. ITEM 11 MOUNTS UNDER K1 AND K2.

REF. DES.	ITEM NO.	REF. DES.	ITEM NO.
C1	1	R6	24
C2	1	R7	22
C3	2	R8	25
C4	3	R9	25
C5	2	R10	25
C6	4	R11	25
C7	5	R12	26
CR1	6	R13	26
CR2	7	R14	26
CR3	8	R15	26
CR4	8	R16	20
E1	9	R17	27
E2	10	R18	26
E3	11	R19	28
J1	12	R20	26
J2	13	R21	28
J3	14	R22	26
K1	15	R23	26
K2	16	R24	29
P1	17	R25	30
Q1	18	R26	31
Q2	18	R27	32
R1	19	R28	26
R2	20	R29	25
R3	21	Z1	33
R4	22	Z2	33
R5	23	Z3	33

LEGEND

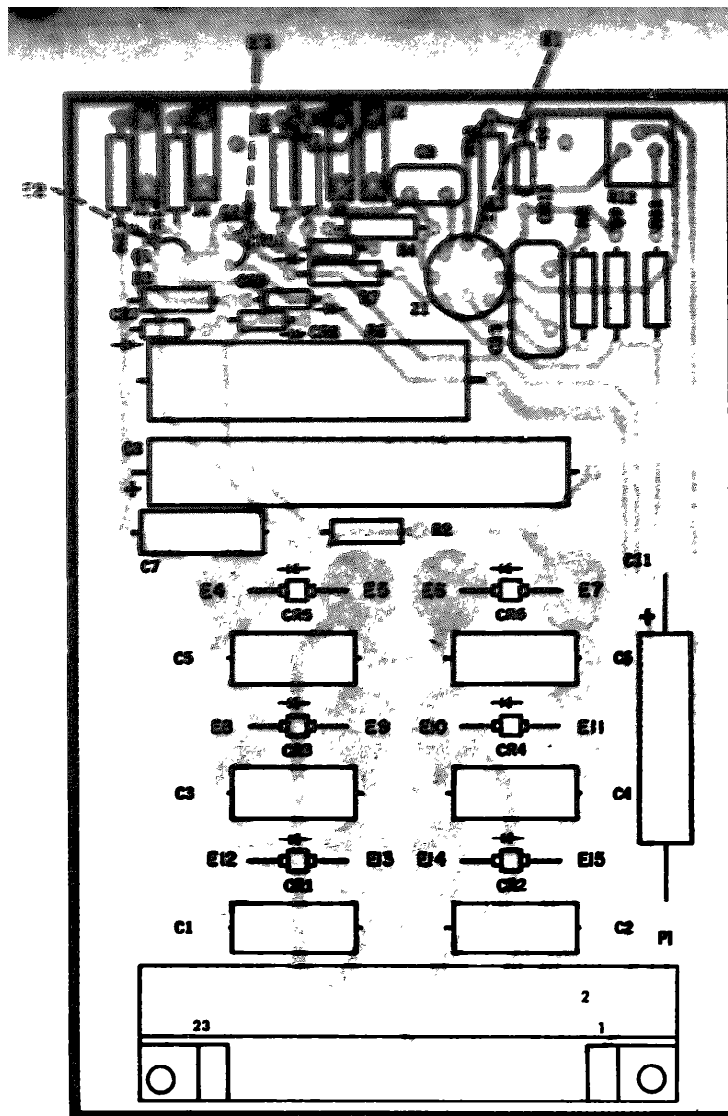
BASING DIAGRAMS ARE SHOWN FROM THE TOP AS ON THE PART LOCATION DIAGRAM.

TRANSISTOR (Q)

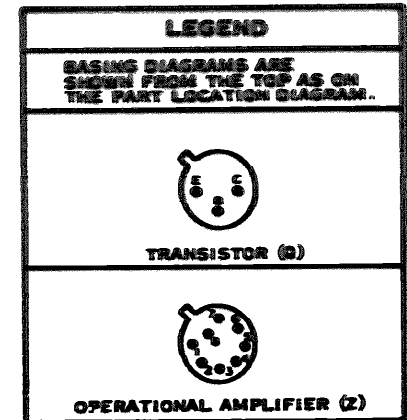
OPERATIONAL AMPLIFIER (Z)

EL 6625-1826-40P-TM-6

Figure 6 Control power input



REF. DES.	ITEM NO.	REF. DES.	ITEM NO.
C1	1	E9	12
C2	1	E10	12
C3	1	E11	12
C4	1	E12	12
C5	1	E13	12
C6	1	E14	12
C7	1	E15	12
C8	2	J1	13
C9	3	J2	14
C10	4	J3	15
C11	5	J4	16
CR1	6	F1	17
CR2	6	Q1	18
CR3	6	Q2	19
CR4	6	R1	20
CR5	6	R2	21
CR6	6	R3	22
CR7	7	R4	23
CR8	7	R5	20
CR9	8	R6	24
CR10	9	R7	21
CR11	8	R8	25
E1	10	R9	23
E2	11	R10	20
E3	11	R11	26
E4	12	R12	27
E5	12	R13	28
E6	12	R14	20
E7	12	Z1	29
E8	12		


NOTES:

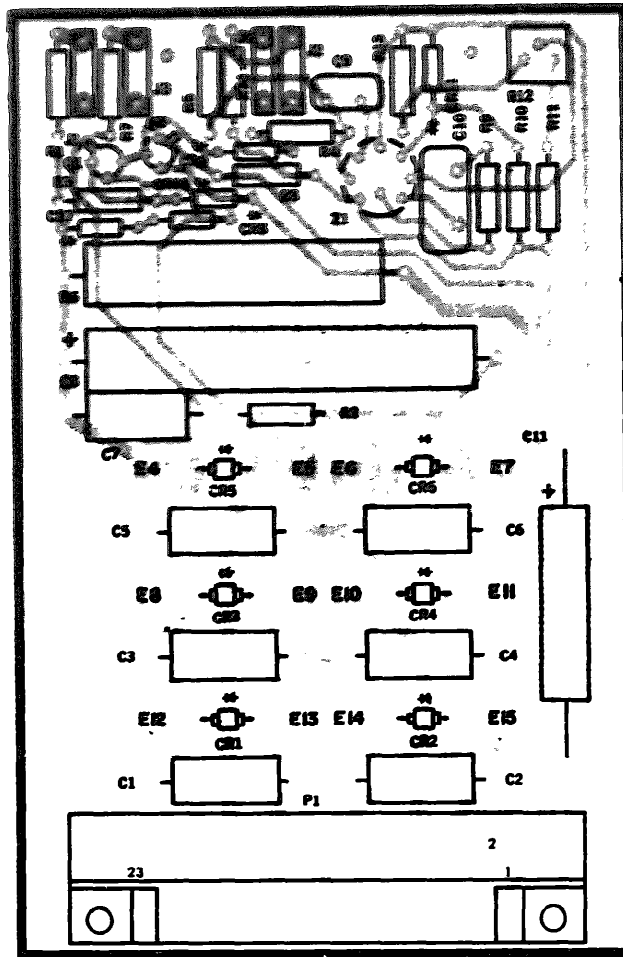
1. LIGHT SHADING INDICATES ETCHED SIDE CIRCUIT PATTERN-DARK SHADING INDICATES COMPONENT SIDE PATTERN.
2. FOR COMPLETE REFERENCE DESIGNATION PREFIX WITH 1A1A5
3. ITEM 10 TO BE PLACED UNDER ITEM 28, Z1
4. ITEM 11 TO BE PLACED UNDER ITEM 17 AND 18, Q1 AND Q2

EL6625-1826-40P-TM-7

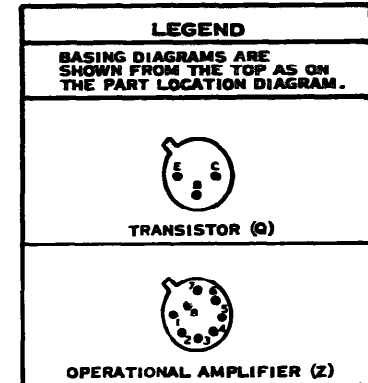
Figure 7 Power supply, +15 Vdc

SECTION II REPAIR PARTS LIST (CONTINUED)

(1) QUANTITY		(2) REPAIR CODE	(3) FEDERAL STOCK NUMBER	(4) PART NUMBER	(5) FIGURE	(6) DESCRIPTION	(7) USABLE ON CODE	(8) QTY OF WEA	(9) QTY INC IN QNTY
(A) REQ	(B) WTRM								
8	2	PADZZ	5910-887-9874	CKL3CH31SPF	81349	CAPACITOR, FIXED, ELECTROLYTIC		EA	1
8	3	PADZZ	5910-460-0889	CM05FD221J03	81349	CAPACITOR, FIXED, MICA DIELECTRIC		EA	1
8	4	PADZZ	5910-847-7288	CK06BK102K	81349	CAPACITOR, FIXED, CERAMIC DIELECTRIC		EA	1
8	5	PADZZ	5910-165-2742	CL21EN0805PE	81349	CAPACITOR, FIXED, ELECTROLYTIC		EA	1
8	6	PADZZ	5961-850-8449	1N5550	81349	SEMICONDUCTOR DEVICE, DIODE		EA	6
8	7	PADZZ	5961-836-6667	1N816	81349	SEMICONDUCTOR DEVICE, DIODE		EA	2
8	8	PADZZ	5961-842-9864	1N914	81349	SEMICONDUCTOR DEVICE, DIODE		EA	2
8	9	PADZZ	5961-523-3940	1N825	81349	SEMICONDUCTOR DEVICE, DIODE		EA	1
8	10	PADZZ	5961-054-0339	7717-19DAP	13103	INSULATOR, DISK		EA	1
8	11	PADZZ	5999-484-5513	7717-188	13103	INSULATOR, DISK		EA	2
8	12	PADZZ	5940-725-9498	SEL2XC07	81349	TERMINAL, STUD		EA	12
8	13	PADZZ	5935-131-969	M39024-11-04	81349	JACK, TIP		EA	1
8	14	PADZZ	5935-131-9681	M39024-11-02	81349	JACK, TIP		EA	1
8	15	PADZZ	5935-131-9726	M39024-11-06	81349	JACK, TIP		EA	1
8	16	PADZZ	5935-131-1	M39024-11-03	81349	JACK, TIP		EA	1
8	17	PADZZ	5935-236-7729	UPCCSGM2JAACU	97954	CONNECTOR, RECEPTACLE, ELECTRICAL		EA	1
8	18	PADZZ	5961-913-1747	2N2907	81349	TRANSISTOR		EA	1
8	19	PADZZ	5961-951-8757	2N2222A	81349	TRANSISTOR		EA	1
8	20	PADZZ	5905-432-6410	RM60D1001F	81349	RESISTOR, FIXED, FILM		EA	4
8	21	PADZZ	5905-983-6914	RM60D1002F	81349	RESISTOR, FIXED, FILM		EA	2
8	22	PADZZ	5905-750-2063	RM60D2210F	81349	RESISTOR, FIXED, FILM		EA	1
8	23	PADZZ	5905-138-1285	RM60D2001F	81349	RESISTOR, FIXED, FILM		EA	2
8	24	PADZZ	5905-763-9237	RM68VR33	81349	RESISTOR, FIXED, WIREWOUND		EA	1
8	25	PADZZ	5905-758-4840	RM60D1501F	81349	RESISTOR, FIXED, FILM		EA	1
8	26	PADZZ	5905-409-7252	RM60C2611F	81349	RESISTOR, FIXED, FILM		EA	1
8	27	PADZZ	5905-196-1020	RT24C2F50L	81349	RESISTOR, VARIABLE		EA	1
8	28	PADZZ	5905-451-7518	RM60C1961F	81349	RESISTOR, FIXED, FILM		EA	1
8	29	PADZZ	5962-861-3220	SN52709L	01295	INTEGRATED CIRCUIT, OPERATIONAL AMPLIFIER		EA	1
						GROUP 1A1A7 INTEGRATED CIRCUITS POWER SUPPLY			
9	1	PADZZ	5910-113-5499	CK06BK104K	81349	CAPACITOR, FIXED, CERAMIC DIELECTRIC		EA	6
9	2	PADZZ	5910-113-5540	CKL5BK104K	81349	CAPACITOR, FIXED, CERAMIC DIELECTRIC		EA	1
9	3	PADZZ	5910-006-6972	CL65BK101MPE	81349	CAPACITOR, FIXED, ELECTROLYTIC		EA	1
9	4	PADZZ	5910-460-0869	CM05FD221J03	81349	CAPACITOR, FIXED, MICA DIELECTRIC		EA	1
9	5	PADZZ	5910-010-8718	CK06BK103K	81349	CAPACITOR, FIXED, CERAMIC DIELECTRIC		EA	1
9	6	PADZZ	5910-936-1332	CSR13F685KL	81349	CAPACITOR, FIXED, ELECTROLYTIC		EA	1
9	7	PADZZ	5910-144-4379	CSR13E125KL	81349	CAPACITOR, FIXED, ELECTROLYTIC		EA	1
9	8	PADZZ	5961-957-6865	1N3611	81349	SEMICONDUCTOR DEVICE, DIODE		EA	6
9	9	PADZZ	5961-836-6667	1N816	81349	SEMICONDUCTOR DEVICE, DIODE		EA	2
9	10	PADZZ	5961-842-9864	1N914	81349	SEMICONDUCTOR DEVICE, DIODE		EA	2
9	11	PADZZ	5961-923-3940	1N825	81349	SEMICONDUCTOR DEVICE, DIODE		EA	1
9	12	XBDZZ	5999-476-6203	6111B1-10	13103	HEAT SINK, ELECTRIC-ELECTRONIC		EA	1
9	13	PADZZ	5961-054-0339	7717-19DAP	13103	INSULATOR, DISK		EA	1



REF. DES.	ITEM NO.	REF. DES.	ITEM NO.	REF. DES.	ITEM NO.	REF. DES.	ITEM NO.	REF. DES.	ITEM NO.
C1	1	CR2	6	E3	11	E15	12	R5	20
C2	1	CR3	6	E4	12	J1	13	R6	24
C3	1	CR4	6	E5	12	J2	14	R7	20
C4	1	CR5	6	E6	12	J3	15	R8	21
C5	1	CR6	6	E7	12	J4	16	R9	25
C6	1	CR7	7	E8	12	P1	17	R10	23
C7	1	CR8	7	E9	12	Q1	18	R11	26
C8	2	CR9	8	E10	12	Q2	19	R12	27
C9	3	CR10	8	E11	12	R1	20	R13	28
C10	4	CR11	9	E12	12	R2	21	R14	20
C11	5	E1	10	E13	12	R3	22	Z1	29
CR1	6	E2	11	E14	12	R4	23		



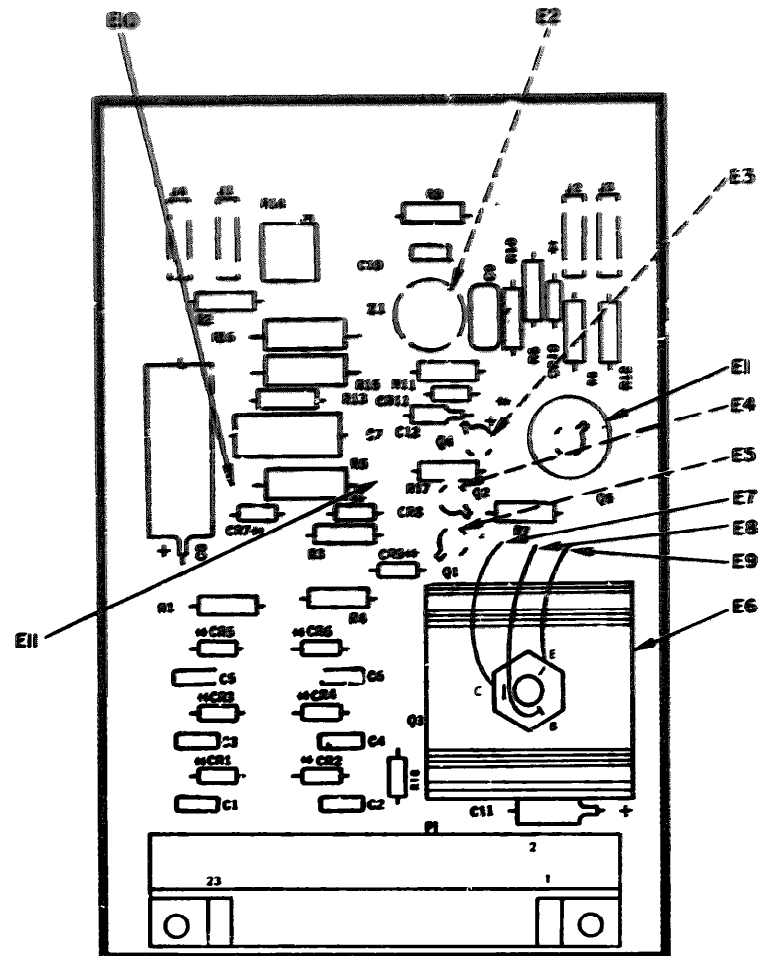
- NOTES:**
1. LIGHT SHADING INDICATES ETCHED SIDE CIRCUIT PATTERN—DARK SHADING INDICATES COMPONENT SIDE PATTERN.
 2. FOR COMPLETE REFERENCE DESIGNATION PREFIX WITH 1A1A6
 3. ITEM 10 TO BE PLACED UNDER ITEM 31 Z1
 4. ITEM 11 TO BE PLACED UNDER ITEM 20 AND 21 Q1 AND Q2

EL6625-1826-40P-TM-8

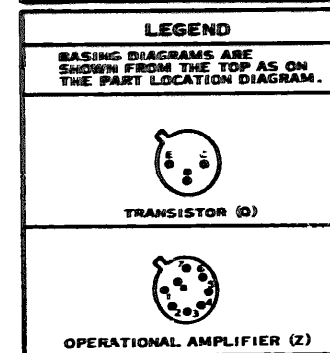
Figure 8. Power supply, -15 Vdc

SECTION II REPAIR PARTS LIST (CONTINUED)

(1) ALLIANCE (A) FIG NO. (B) ITEM NO.		(2) SMR CODE	(3) FEDERAL STOCK NUMBER	(4) PART NUMBER	(5) FROM	(6) DESCRIPTION USABLE ON CODE	(7) UNIT OF MEAS	(8) QTY INC IN UNIT
9	14	PADZZ	5999-484-5513	7717-12N	13103	INSULATOR, DISK	EA	3
9	15	VEDZZ	5999-199-5539	2209-4A	13103	HEAT SINK, ELECTRIC-ELECTRONIC	EA	1
9	16	PADZZ	5935-131-9696	M39024-11-24	81349	JACK, TIP	EA	1
9	17	PADZZ	5935-131-9681	M39024-11-02	81349	JACK, TIP	EA	1
9	18	PADZZ	5935-131-9726	M39024-11-06	81349	JACK, TIP	EA	1
9	19	PADZZ	5931-131-9693	M39024-11-03	81349	JACK, TIP	EA	1
9	20	PADZZ	5935-689-1891	UPCCSGM23AACH	57954	CONNECTOR, RECEPTACLE, ELECTRICAL	EA	1
9	21	PADZZ	5961-925-3777	2N2907A	81349	TRANSISTOR	EA	2
9	22	PADZZ	5961-951-8757	2N2222A	81349	TRANSISTOR	EA	1
9	23	PADZZ	5961-050-3463	2N2151	81349	TRANSISTOR	EA	1
9	24	PADZZ	5961-104-9898	2N3506	81349	TRANSISTOR	EA	1
9	25	PADZZ	5905-972-4687	FW70U1R00F	81349	RESISTOR, FIXED, WIREWOUND	EA	1
9	26	PADZZ	5905-432-6410	RN60D1001F	81349	RESISTOR, FIXED, FILM	EA	3
9	27	PADZZ	5905-758-4840	RN60D1001F	81349	RESISTOR, FIXED, FILM	EA	2
9	28	PADZZ	5905-028-1832	RN60D1301F	81349	RESISTOR, FIXED, FILM	EA	1
9	29	PADZZ	5905-725-7547	RW69V1R8	81349	RESISTOR, FIXED, WIREWOUND	EA	1
9	30	PADZZ	5905-138-1285	RN60D2001F	81349	RESISTOR, FIXED, FILM	EA	1
9	31	PADZZ	5905-983-6914	RN60D1002F	81349	RESISTOR, FIXED, FILM	EA	1
9	32	PADZZ	5905-261-7693	RN60D1621F	81349	RESISTOR, FIXED, FILM	EA	1
9	33	PADZZ	5905-233-7141	RN60D2741F	81349	RESISTOR, FIXED, FILM	EA	1
9	34	PADZZ	5905-189-2467	RN60D3001F	81349	RESISTOR, FIXED, FILM	EA	1
9	35	PADZZ	5905-079-6336	RT24C2P102	81349	RESISTOR, VARIABLE	EA	1
9	36	PADZZ	5905-405-0955	RN65C2871F	81349	RESISTOR, FIXED, FILM	EA	1
9	37	PADZZ	5905-823-3580	RN65C1331F	81349	RESISTOR, FIXED, FILM	EA	1
9	38	PADZZ	5905-232-7791	RN60D500F	81349	RESISTOR, FIXED, FILM	EA	1
9	39	PADZZ	5905-069-7564	RW81U1210F	81349	RESISTOR, FIXED, FILM	EA	1
9	40	PADZZ	5962-861-3220	SN52709L	01295	INTEGRATED CIRCUIT, OPERATIONAL AMPLIFIER	EA	1
9	41	PADZZ	5940-082-5002	SEL6XC01	81349	TERMINAL, STUD	EA	5
						GROUP LALA8 POWER SUPPLY, 150/250 VDC		
10	1	PADZZ	5910-487-8424	CM05FD391J03	81349	CAPACITOR, FIXED, MICA DIELECTRIC	EA	6
10	2	PADZZ	5910-113-9453	CK06BX105K	81349	CAPACITOR, FIXED, CERAMIC DIELECTRIC	EA	2
10	3	PADZZ	5910-124-4383	CSR13F226KL	81349	CAPACITOR, FIXED, ELECTROLYTIC	EA	1
10	4	PADZZ	5910-490-0397	CM05ED470J03	81349	CAPACITOR, FIXED, MICA DIELECTRIC	EA	1
10	5	PADZZ	5910-010-8718	CK06BX103K	81349	CAPACITOR, FIXED, CERAMIC DIELECTRIC	EA	1
10	6	PADZZ	5910-113-5499	CK06BX104K	81349	CAPACITOR, FIXED, CERAMIC DIELECTRIC	EA	3
10	7	PADZZ	5910-211-2503	CHO9A1NF474K	81349	CAPACITOR, FIXED, PAPER DIELECTRIC	EA	1
10	8	PADZZ	5961-054-2904	1N3613	81349	SEMICONDUCTOR DEVICE, DIODE	EA	8
10	9	PADZZ	5961-852-7549	1N754A	81349	SEMICONDUCTOR DEVICE, DIODE	EA	3
10	10	PADZZ	5961-842-9864	1N914	81349	SEMICONDUCTOR DEVICE, DIODE	EA	5
10	11	PADZZ	5961-892-0889	1N398B	81349	SEMICONDUCTOR DEVICE, DIODE	EA	1
10	12	PADZZ	5961-825-7873	1N3028B	81349	SEMICONDUCTOR DEVICE, DIODE	EA	1
10	13	PADZZ	5961-054-0339	7717-19DAP	13103	INSULATOR, DISK	EA	1



REF. DES.	ITEM NO.	REF. DES.	ITEM NO.	REF. DES.	ITEM NO.	REF. DES.	ITEM NO.
CR1	1	CR9	10	Q2	22	R17	38
CR2	2	CR10	11	Q3	23	R18	39
CR3	3	CR11	12	Q4	24	Z1	40
CR4	4	EN	13	Q5	25		
CR5	5	E2	14	Q6	26		
CR6	6	E3	15	Q7	27		
CR7	7	E4	16	Q8	28		
CR8	8	E5	17	Q9	29		
CR9	9	E6	18	Q10	30		
CR10	10	E7	19	Q11	31		
CR11	11	E8	20	Q12	32		
CR12	12	E9	21	Q13	33		
CR13	13	E10	22	Q14	34		
CR14	14	E11	23	Q15	35		
CR15	15	J1	24	Q16	36		
CR16	16	J2	25	Q17	37		
CR17	17	J3	26				
CR18	18	J4	27				
CR19	19	P1	28				
CR20	20	Q1	29				



NOTES:

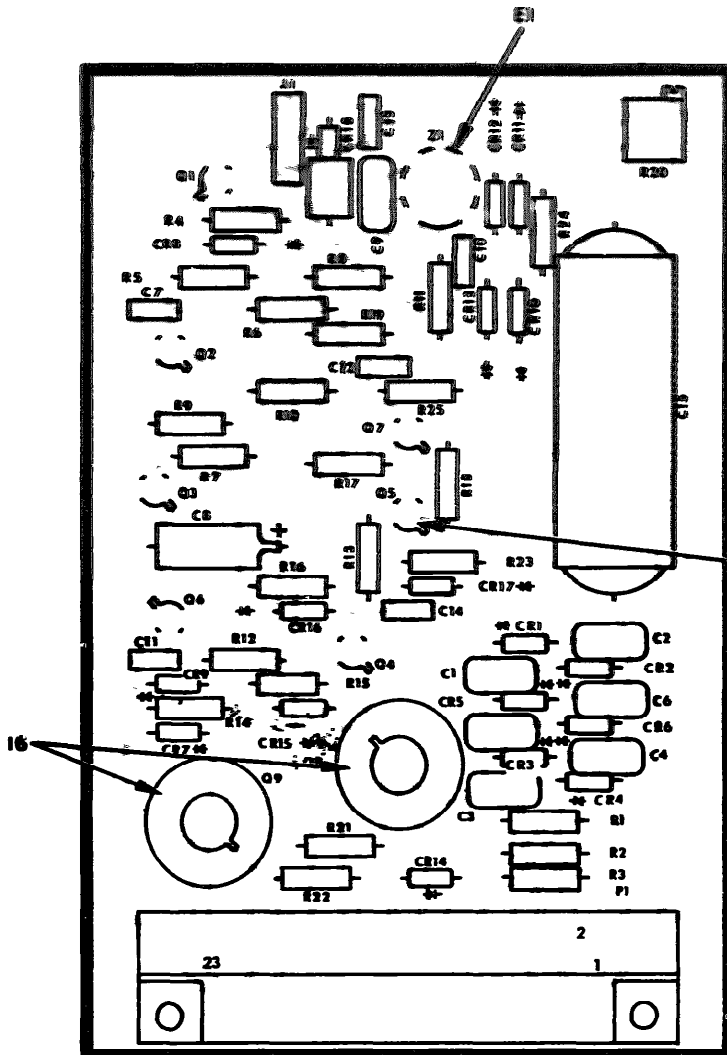
1. LIGHT SHADING INDICATES ETCHED SIDE CIRCUIT PATTERN-DARK SHADING INDICATES COMPONENT SIDE PATTERN.
2. FOR COMPLETE REFERENCE DESIGNATION PREFIX WITH (1A1A7)
3. E1 AND E6 ARE HEATSINKS, E2 THROUGH E5 ARE INSULATOR DISKS, E7 THROUGH E11 ARE TERMINAL STUDS. ALL ARE MOUNTED UNDER THE COMPONENTS AS INDICATED

EL6625-1826-40P-TM-9

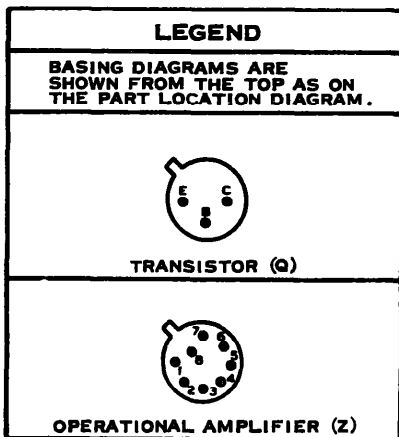
Figure 9 Integrated circuits, power supply.

SECTION II. REPAIR PARTS LIST (CONTINUED)

(1) ILLUSTRATION		(2) PART CODE	(3) FEDERAL STOCK NUMBER	(4) PART NUMBER	(5) QUANTITY	(6) DESCRIPTION	(7) GROUP OR CODE	(8) QUANTITY OF GROUP	(9) QUANTITY OF PART
(A) ORG. NO.	(B) ITEM NO.								
10	14	PADZZ	5935-484-5513	77L7-18H	13103	INSULATOR, DISK	EA		7
10	15	PADZZ	5935-1340-9726	M59024-11-06	81349	JACK, TIP	EA		1
10	16	XBDZZ	5935-799-5539	2209-4A	13103	HEAT SINK, ELECTRIC-ELECTRONIC	EA		2
10	17	PADZZ	5935-149-3918	UPC59823WACK	97964	CONNECTOR, RECEPTACLE, ELECTRICAL	EA		1
10	18	PADZZ	5961-925-3777	2N5667A	81349	TRANSISTOR	EA		3
10	19	PADZZ	5961-226-8579	2N930	81349	TRANSISTOR	EA		2
10	20	PADZZ	5961-951-8757	2N2222A	81349	TRANSISTOR	EA		2
10	21	PADZZ	5961-022-5670	2N3439	81349	TRANSISTOR	EA		2
10	22	PADZZ	5905-945-7053	RW70FLOROF	81349	RESISTOR, FIXED, WIREWOUND	EA		4
10	23	PADZZ	5905-138-1285	RN60D2001F	81349	RESISTOR, FIXED, FILM	EA		3
10	24	PADZZ	5905-225-9390	RN60D7503F	81349	RESISTOR, FIXED, FILM	EA		1
10	25	PADZZ	5905-432-0468	RN60D3923F	81349	RESISTOR, FIXED, FILM	EA		1
10	26	PADZZ	5905-189-2472	RN60D4322F	81349	RESISTOR, FIXED, FILM	EA		1
10	27	PADZZ	5905-721-2385	RN60D3322F	81349	RESISTOR, FIXED, FILM	EA		2
10	28	PADZZ	5905-758-4840	RN60D1501F	81349	RESISTOR, FIXED, FILM	EA		1
10	29	PADZZ	5905-432-6410	RN60D1001F	81349	RESISTOR, FIXED, FILM	EA		3
10	30	PADZZ	5905-983-6914	RN60D1002F	81349	RESISTOR, FIXED, FILM	EA		2
10	31	PADZZ	5905-988-2313	RN60D1211F	81349	RESISTOR, FIXED, FILM	EA		1
10	32	PADZZ	5905-194-1695	RN60D4751F	81349	RESISTOR, FIXED, FILM	EA		2
10	33	PADZZ	5905-197-3172	RN60D2742F	81349	RESISTOR, FIXED, FILM	EA		1
10	34	PADZZ	5905-998-9178	RT24C2F202	81349	RESISTOR, VARIABLE	EA		1
10	35	PADZZ	5905-403-3147	RN60C4751F	81349	RESISTOR, FIXED, FILM	EA		1
10	36	PADZZ	5905-208-3800	RN60D4752F	81349	RESISTOR, FIXED, FILM	EA		1
10	37	PADZZ	5962-861-3220	SN52709L	01295	INTEGRATED CIRCUIT, OPERATIONAL AMPLIFIER	EA		1
						GROUP: 1A1A9 HEAT SINK ASSEMBLY			
11	1	PADZZ	5961-069-2469	2N1724	81349	TRANSISTOR	EA		1
11	2	PADZZ	5905-983-6914	RN60D1002F	81349	RESISTOR, FIXED, FILM	EA		2
11	3	PADZZ	5961-050-3464	2N3846	81349	TRANSISTOR	EA		1
11	4	XBDZZ		695890-2	96214	HEAT SINK	EA		1
11	5	XBDZZ		670111-55	96214	BAND, MARKER, CABLE	EA		1
11	6	PADZZ	5935-489-9999	M24308-4-3	81349	CONNECTOR, PLUG, ELECTRICAL	EA		1
11	7	PADZZ	5940-905-4516	SE209D01	81349	TERMINAL, STUD	EA		4
11	8	PADZZ	5961-085-0468	2N3902	81349	TRANSISTOR	EA		2
11	9	PADZZ	5961-050-3463	2N2151	81349	TRANSISTOR	EA		2
						GROUP: 1A1A10 FILTER ASSEMBLY			
12	1	PAHZZ	5905-410-7428	RN65C1004F	81349	RESISTOR, FIXED, FILM	EA		4
12	2	PAHZZ		715384-1	96214	INDUCTOR, POWER	EA		4
12	3	PAHZZ	5935-838-3695	MS3124E12-3P	96906	CONNECTOR, RECEPTACLE, ELECTRICAL	EA		1
12	4	PAHZZ	5935-880-8896	MS3124E14-5P	96906	CONNECTOR, RECEPTACLE, ELECTRICAL	EA		1
12	5	PAHZZ	5915-127-4305	9013-000-1002	72982	FILTER, ELECTROMAGNETIC INTERFERENCE	EA		2
12	6	PAHZZ	5940-820-4549	2051-2	71279	TERMINAL, STUD	EA		1
12	7	PAHZZ	5915-990-1409	5JX94	56289	FILTER, ELECTROMAGNETIC INTERFERENCE	EA		4



REF. DES.	ITEM NO.	REF. DES.	ITEM NO.
CI	1	EB	14
C2	1	J1	15
C3	1	MP1	16
C4	1	MP2	16
C5	1	P1	17
C6	1	Q1	18
C7	2	Q2	19
C8	3	Q3	18
C9	4	Q4	20
C10	5	Q5	20
C11	6	Q6	18
C12	2	Q7	19
C13	6	Q8	21
C14	6	Q9	21
C15	7	R1	22
CR1	8	R2	22
CR2	8	R3	22
CR3	8	R4	23
CR4	8	R5	24
CR5	8	R6	25
CR6	8	R7	26
CR7	9	R8	23
CR8	9	R9	27
CR9	10	R10	27
CR10	11	R11	28
CR11	10	R12	29
CR12	10	R13	22
CR13	10	R14	30
CR14	8	R15	30
CR15	8	R16	31
CR16	9	R17	32
CR17	10	R18	32
CR18	12	R19	33
E1	13	R20	34
E2	14	R21	29
E3	14	R22	29
E4	14	R23	23
E5	14	R24	35
E6	14	R25	36
E7	14	Z1	37



NOTES

1. LIGHT SHADING INDICATES ETCHED SIDE CIRCUIT PATTERN-DARK SHADING INDICATES COMPONENT SIDE PATTERN.
2. FOR COMPLETE REFERENCE DESIGNATION PREFIX WITH 1A1A8.
3. E1 IS AN INSULATOR DISK WHICH GOES UNDER Z1. E2 THRU E8 GO UNDER Q1 THRU Q7. MP1 AND MP2 ARE HEATSINKS WHICH GO UNDER Q8,Q9.

EL6625-1826-40P-TM-10

Figure 10 Power supply, 150/250 Vdc

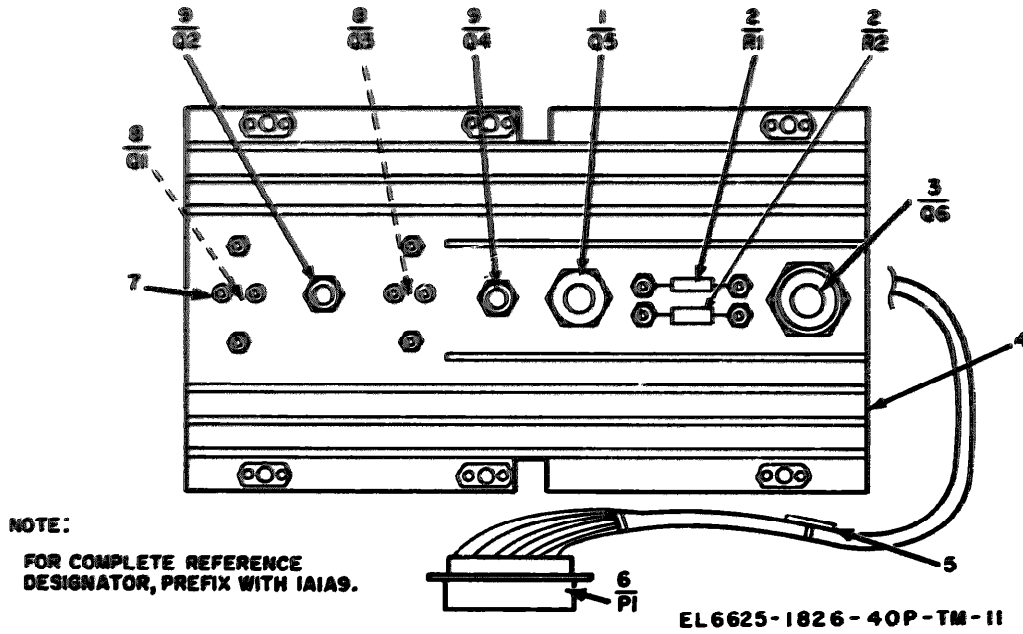
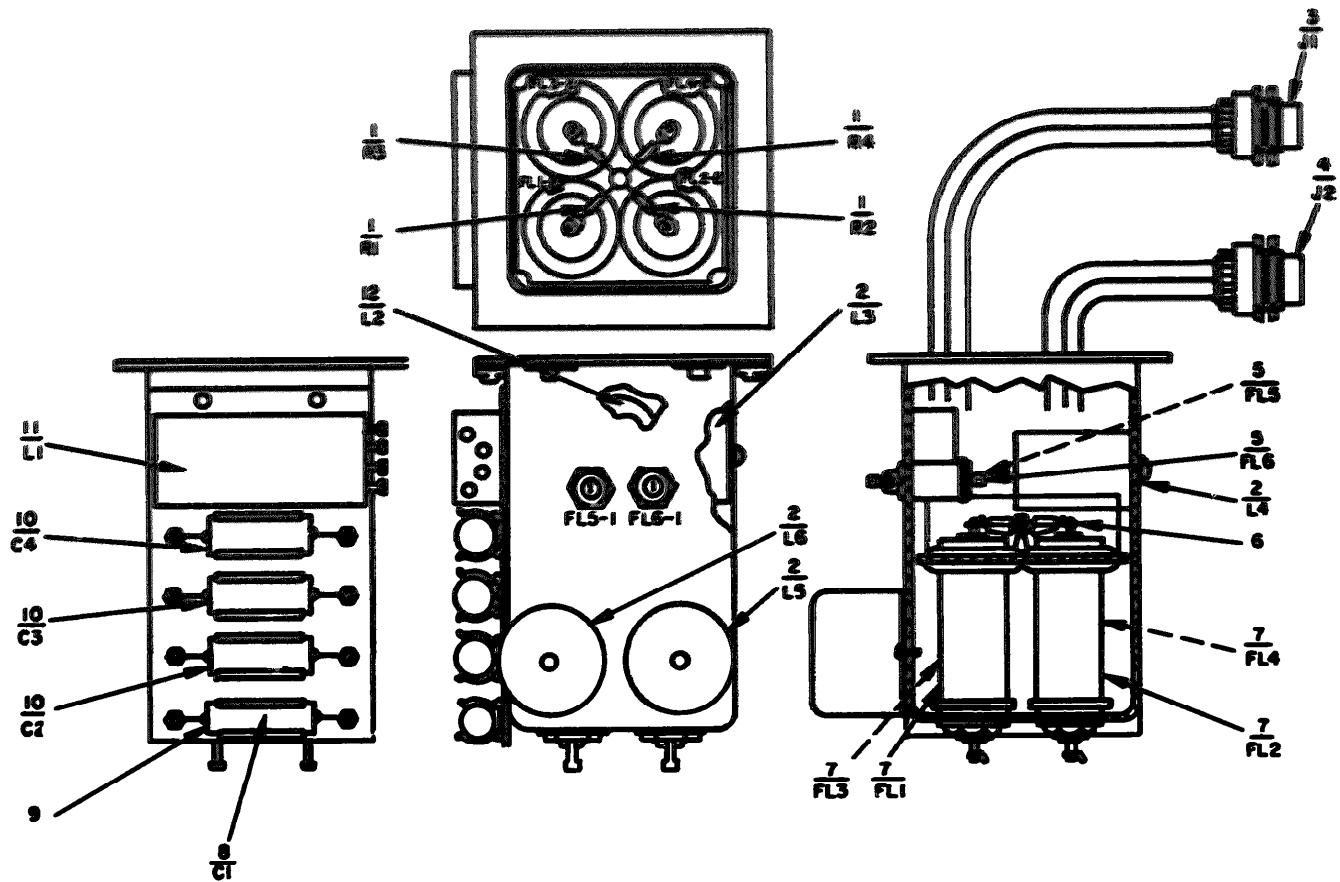


Figure 11. Heat sink assembly.

SECTION II REPAIR PARTS LIST (CONTINUED)

(1) ILLUSTRATION		(2) QTY CODE	(3) FEDERAL STOCK NUMBER	(4) PART NUMBER	(5) QTY REQD	(6) DESCRIPTION	(7) REPLACE ON CODE	(8) UNIT OF MEAS	(9) QTY REQD ON UNIT
(A) FIG NO.	(B) ITEM NO.								
12	8	PAZZ	5920-352-2552	MS3126F12-02-01A	81349	CONNECTOR, FIRED, PAPER DIELECTRIC		EA	1
12	9	PAZZ	5940-985-4514	SE2000R	81349	TERMINAL, STD		EA	2
12	10	PAZZ	5920-211-2583	CH05ALNR70A	81349	CONNECTOR, FIRED, PAPER DIELECTRIC		EA	3
12	11	PAZZ	5913-433-2451	69203-1	96204	INDUCTOR, POWER		EA	1
12	12	PAZZ		715203-1	96204	INDUCTOR, POWER		EA	1
						GROUP: IMP TRHO INLO CABLE ASSEMBLIES			
13	1	PAZZ	5935-765-5991	MS3126F12-3S	96906	CONNECTOR, PLUG, ELECTRICAL		EA	1
13	2	PAZH	6625-196-2844	CX-1240R/U	80058	CABLE ASSEMBLY, POWER, ELECTRICAL		EA	1
13	3	PAZZ	5935-503-5283	33-106	72653	PROBE, TEST, RED		EA	1
13	4	PAZZ	6625-453-3401	33-108	72653	PROBE, TEST, BLACK		EA	1
13	5	PAZZ	5935-843-7133	UP106M	81349	CONNECTOR, PLUG, ELECTRICAL		EA	1
13	6	PAZH	6225-470-4315	CX-1240R/U	80058	CABLE ASSEMBLY, POWER ELECTRICAL		EA	1
13	7	PAZZ	5935-761-3885	MS3126F14-5S	96906	CONNECTOR, PLUG, ELECTRICAL		EA	1
13	8	PAZZ	5935-726-6487	MS3126F20-41P	96906	CONNECTOR, PLUG, ELECTRICAL		EA	2
13	9	PAZH	6625-489-0456	CX-12422/AAM-33	80058	CABLE ASSEMBLY, SPECIAL PURPOSE, ELECTRICAL		EA	1
13	10	PAZZ	5935-724-7592	MS3126F20-41S	96906	CONNECTOR, PLUG, ELECTRICAL		EA	1
13	11	PAZZ	5935-490-8369	M24308-4-5	81349	CONNECTOR, PLUG, ELECTRICAL		EA	1
13	12	PAZH	6625-489-0429	CX-12423/AAM-33	80058	CABLE ASSEMBLY, SPECIAL PURPOSE, ELECTRICAL		EA	1
13	13	PAZZ	5935-724-7578	MS3126F22-55P	96906	CONNECTOR, PLUG, ELECTRICAL		EA	1
13	14	PAZH	6625-489-0457	CX-12424/AAM-33	80063	CABLE ASSEMBLY, SPECIAL PURPOSE, ELECTRICAL		EA	1
13	15	PAZZ	5935-724-7580	MS3126F22-55S	96906	CONNECTOR, PLUG, ELECTRICAL		EA	1
13	16	PAZZ	5935-497-0925	L22TF95P6X1	09922	CONNECTOR, PLUG, ELECTRICAL		EA	1
13	17	PAZH	6625-196-2859	CX-12425/AAM-33	80058	CABLE ASSEMBLY, SPECIAL PURPOSE, ELECTRICAL		EA	1
13	18	PAZZ	5935-497-0927	L22TF95S6X1	09922	CONNECTOR, PLUG, ELECTRICAL		EA	1
13	19	PAZZ	5935-226-4713	MS3192A20A	96906	CONTACT, ELECTRICAL		EA	52
13	20	PAZZ	5935-111-4955	LR0XZK5	09922	CONTACT, ELECTRICAL		EA	20
13	21	PAZZ	5935-078-6804	MS3193A20A	96906	CONTACT, ELECTRICAL		EA	52
13	22	PAZZ	5999-259-3980	LR0XZK5	09922	CONTACT, ELECTRICAL		EA	12
13	23	PAZZ	5935-497-0928	L22TF95S6Y1	09922	CONNECTOR, PLUG, ELECTRICAL		EA	1
13	24	PAZH	6625-489-2665	CX-12426/AAM-33	80058	CABLE ASSEMBLY, SPECIAL PURPOSE, ELECTRICAL		EA	1
13	25	PAZZ	5935-497-0926	L22TF95P6Y1	09922	CONNECTOR, PLUG, ELECTRICAL		EA	1
13	26	XAZZ	5999-988-5414	MS3192-12A	96906	CONTACT, ELECTRICAL		EA	11
13	27	XAZZ	5935-135-4072	L22TF19P6N1	09922	CONNECTOR, PLUG, ELECTRICAL		EA	1
13	28	PAZZ	6625-489-2663	CX-12427/AAM-33	80058	CABLE ASSEMBLY, SPECIAL PURPOSE, ELECTRICAL		EA	1
13	29	XAZZ	5935-275-7823	DCM8W8S	71468	CONNECTOR, RECEPTACLE, ELECTRICAL		EA	1
13	30	XAZZ	5999-496-8009	DM53742-16	71468	CONTACT, ELECTRICAL		EA	8
13	31	XAZZ	5935-976-5425	M24308-2-4	81349	CONNECTOR, RECEPTACLE, ELECTRICAL		EA	1
13	32	PAZZ	6625-489-2666	CX-12428/AAM-33	80058	CABLE ASSEMBLY, SPECIAL PURPOSE, ELECTRICAL		EA	1
13	33	XAZZ	5935-726-6486	MS3126F20-41PW	96906	CONNECTOR, PLUG, ELECTRICAL		EA	1
13	34	PAZZ	5935-988-9656	MS3126F12-10P	96906	CONNECTOR, PLUG, ELECTRICAL		EA	1
13	35	PAZH	6625-242-5795	CX-12429/AAM-33	80058	CABLE ASSEMBLY, SPECIAL PURPOSE, ELECTRICAL		EA	1
13	36	PAZZ	5935-905-9881	MS3126F12-10S	96906	CONNECTOR, PLUG, ELECTRICAL		EA	1



NOTE:
FOR COMPLETE REFERENCE
DESIGNATOR PREFIX WITH 1A1A10.

EL6625-1826-40P-TM-12

Figure 12 Filter assembly.

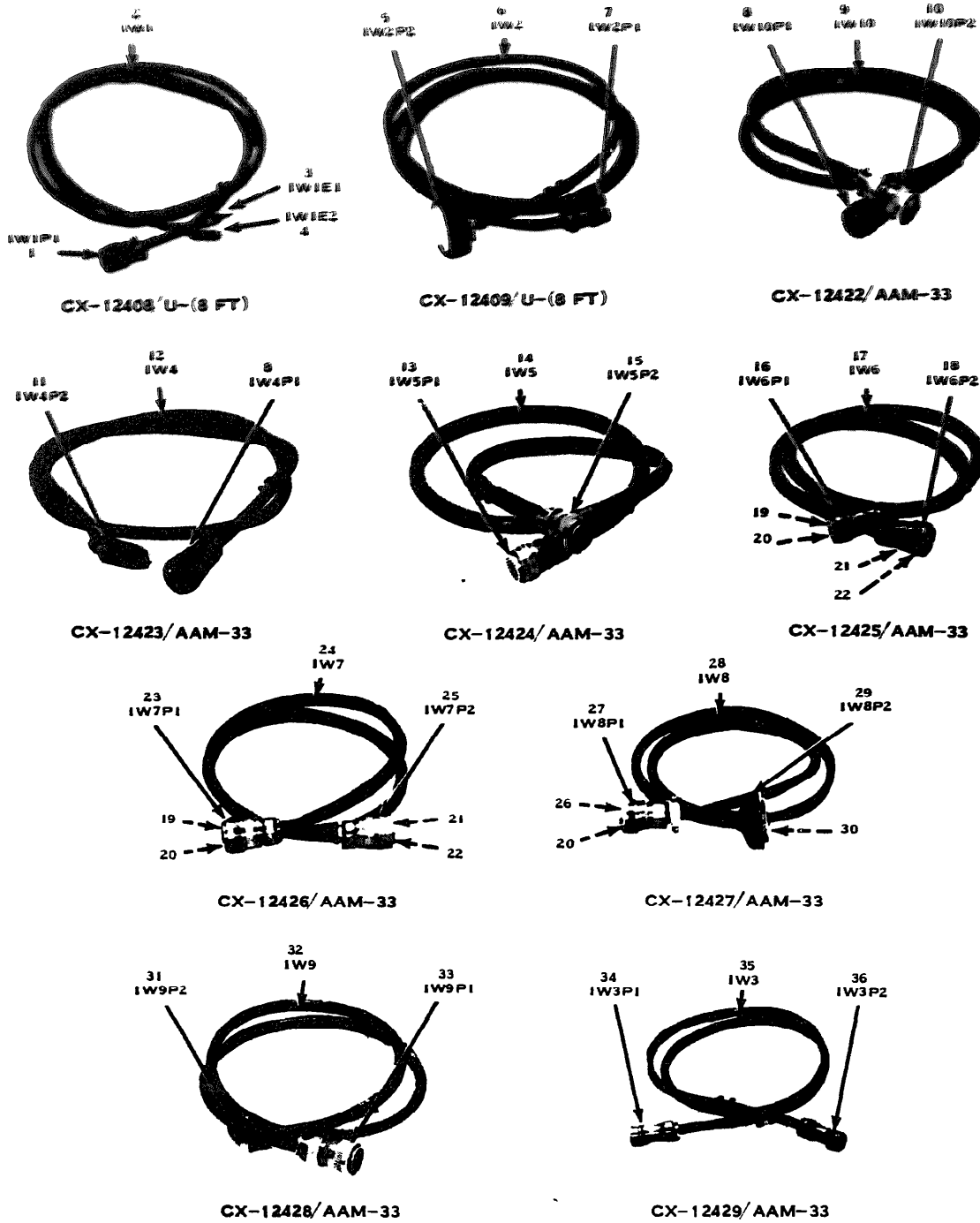


Figure 13 Cable assemblies

SECTION IV. FEDERAL STOCK NUMBER AND NUMBER INDEX (continued)

STOCK NUMBER	FIG. NO.	ITEM NO.	STOCK NUMBER	FIG. NO.	ITEM NO.
5325-576-8497	2	42	5905-409-7252	7	26
5355-616-7669	2	60	5905-409-7252	8	26
5355-985-6888	2	59	5905-410-7428	12	1
5905-004-6103	6	21	5905-412-4049	6	31
5905-006-6988	5	55	5905-432-0468	10	25
5905-025-5984	6	24	5905-432-6410	3	16
5905-025-5988	3	12	5905-432-6410	5	37
5905-028-1832	9	28	5905-432-6410	7	20
5905-058-1770	5	58	5905-432-6410	8	20
5905-062-0151	5	49	5905-432-6410	9	26
5905-067-7338	6	28	5905-432-6410	10	29
5905-069-3913	4	28	5905-451-7518	7	28
5905-069-7564	9	39	5905-451-7518	8	28
5905-079-6336	5	51	5905-452-0768	5	52
5905-079-6336	9	35	5905-477-9176	6	23
5905-099-0545	4	22	5905-480-5196	6	27
5905-112-1233	6	25	5905-483-0355	2	31
5905-112-7056	4	29	5905-489-2159	4	20
5905-121-6327	6	29	5905-489-2159	5	46
5905-137-0804	4	32	5905-496-5253	6	19
5905-137-0804	5	41	5905-539-2574	2	25
5905-138-1285	7	23	5905-581-0447	2	26
5905-138-1285	8	23	5905-681-3628	5	56
5905-138-1285	9	30	5905-721-2385	3	13
5905-138-1285	10	23	5905-721-2385	10	27
5905-142-0901	3	14	5905-721-2387	5	48
5905-142-0901	4	25	5905-725-7547	9	29
5905-142-0932	4	24	5905-750-2063	7	22
5905-142-0932	5	45	5905-750-2063	8	22
5905-147-2062	5	44	5905-758-4840	5	36
5905-153-0135	6	22	5905-758-4840	7	25
5905-189-2467	4	26	5905-758-4840	8	25
5905-189-2467	5	39	5905-758-4840	9	27
5905-189-2467	9	34	5905-758-4840	10	28
5905-189-2472	10	26	5905-763-9237	7	24
5905-189-2484	5	53	5905-763-9237	8	24
5905-192-3479	5	43	5905-823-3580	9	37
5905-194-1695	5	42	5905-883-9168	2	47
5905-194-1695	10	32	5905-899-3111	2	45
5905-195-6404	5	50	5905-926-8630	6	20
5905-196-1020	7	27	5905-945-7053	10	22
5905-196-1020	8	27	5305-947-5641	6	32
5905-197-3172	10	33	5905-957-7108	4	30
5905-208-3800	5	40	5905-957-8633	3	20
5905-208-3800	10	36	5905-957-8633	4	23
5905-211-0230	5	54	5905-957-8633	5	57
5905-214-2927	5	38	5905-969-6806	2	49
5905-223-2741	6	26	5905-972-4687	9	25
5905-225-9390	10	24	5905-983-6914	4	27
5905-225-9756	2	46	5905-983-6914	5	35
5905-232-7791	9	38	5905-983-6914	7	21
5905-233-4573	3	15	5905-983-6914	8	21
5905-233-7141	3	18	5905-983-6914	^	31
5905-233-7141	4	31	5905-983-6914	10	30
5905-233-7141	9	33	5905-983-6914	11	2
5905-256-5051	6	30	5905-985-5844	5	47
5905-261-7693	9	32	5905-988-2309	3	19
5905-403-3147	10	35	5905-988-2309	4	21
5905-405-0955	9	36	5905-988-2310	3	17

SECTION IV. FEDERAL STOCK NUMBER AND PART NUMBER INDEX (continued)

STOCK NUMBER	FIG. NO.	ITEM NO.	STOCK NUMBER	FIG. NO.	ITEM NO.
5905-388-2313	10	31	5915-194-4876	2	57
5905-998-9178	10	34	5915-990-1409	12	7
5910-006-6972	9	3	5925-118-1098	2	10
5910-010-8666	4	4	5925-854-7358	2	7
5910-010-8666	5	13	5930-105-1997	2	21
5910-010-8718	3	1	5930-118-8067	2	19
5910-101-8718	5	1	5930-405-0468	2	3
5910-010-8718	6	2	5930-421-8978	2	4
5910-010-8718	7	4	5930-451-4197	2	28
5910-010-8718	9	5	5930-655-1513	2	24
5910-010-8718	10	5	5930-793-4977	2	20
5910-051-9794	5	2	5931-131-9693	9	19
5910-113-5499	9	1	5935-078-6804	13	21
5910-113-5499	10	6	5935-111-4955	13	20
5910-113-5540	7	1	5935-131-9681	5	24
5910-113-5540	8	1	5935-131-9681	6	13
5910-113-5540	9	2	5935-131-9681	7	14
5910-113-9453	10	2	5935-131-9681	8	14
5910-124-4383	3	4	5935-131-9681	9	17
5910-124-4383	4	1	5935-131-9693	7	16
5910-124-4383	5	4	5935-131-9693	8	16
5910-124-4383	10	3	5935-131-9696	3	8
5910-139-9751	2	43	5935-131-9696	4	12
5910-144-4379	9	7	5935-131-9696	5	23
5910-154-0547	5	14	5935-131-9696	6	12
5910-165-2742	7	5	5935-131-9696	7	13
5910-165-2742	8	5	5935-131-9696	8	13
5910-176-7335	5	10	5335-131-9696	9	16
5910-2100-2503	10	7	5935-131-9726	5	25
5910-211-2503	12	10	5935-131-9726	6	14
5910-450-5239	5	8	5935-131-9776	7	15
5910-453-8796	5	15	5935-131-9726	8	15
5910-453-8796	6	5	5935-131-9726	9	18
5910-456-0812	7	5	5935-131-9736	10	15
5910-460-0852	5	6	5935-131-9728	5	26
5910-460-0869	5	3	5935-135-4072	13	27
5910-460-0869	7	3	5935-149-3918	10	17
5910-460-0869	8	3	5935-226-4713	13	19
5910-460-0869	9	4	5935-236-7729	8	17
5910-487-8424	10	1	5935-275-7823	13	29
5910-490-0397	3	3	5935-410-9250	2	44
5910-490-0397	5	11	5935-422-4784	2	8
5910-490-0397	10	4	5935-433-2452	3	7
5910-495-0042	4	2	5935-489-9999	11	6
5910-495-0042	6	3	5935-490-8389	13	11
5910-707-3268	5	9	5935-497-0925	13	16
5910-713-4309	3	2	5935-497-0926	13	25
5910-728-4093	5	12	5935-497-0927	13	18
5910-781-1154	5	7	5935-497-0928	13	23
5910-847-7288	8	4	5935-497-0930	2	13
5910-850-0552	12	8	5935-497-0932	8	14
5910-887-9874	7	2	5935-497-0932	2	15
5910-887-9874	8	2	5935-497-0933	2	9
5910-899-9004	4	3	5935-497-0333	2	17
5910-936-1332	6	1	5935-503-5283	13	3
5910-936-1332	7	6	5935-665-6099	7	17
5910-983-1157	7	5	5935-689-1875	2	52
5910-983-1157	6	4	5935-689-1876	2	51
5915-127-4305	12	5	5935-689-1884	2	11

SECTION IV FEDERAL STOCK NUMBER AND PART NUMBER INDEX (continued)

STOCK NUMBER	FIG. NO.	ITEM NO.	STOCK NUMBER	FIG. NO.	ITEM NO.
5935-689-1884	4	16	5961-087-6047	5	20
5935-689-1885	2	18	5961-104-9898	9	24
5935-689-1887	5	28	5961-226-8579	5	32
5935-689-1891	9	20	5961-226-8579	10	19
5935-702-4199	2	2	5961-723-3602	2	5
5935-724-7578	13	13	5961-752-6121	4	7
5935-724-7580	13	15	5961-762-0201	2	23
5935-724-7592	13	10	5961-762-0201	7	6
5935-725-4496	2	48	5961-821-2309	5	18
5935-726-6486	13	32	5961-825-7873	10	12
5935-726-6487	13	8	5961-836-6667	7	7
5935-761-3885	13	7	5961-836-6667	8	7
5935-762-0312	2	1	5961-836-6667	9	9
5935-765-5991	13	1	5961-842-9864	5	16
5935-784-5968	2	50	5961-842-9864	6	8
5935-838-3695	12	3	5961-842-9864	7	8
5935-843-7133	13	5	5961-842-9864	8	8
5935-878-1828	2	54	5961-842-9864	9	10
5935-880-8896	12	4	5961-842-9864	10	10
5935-905-9881	13	36	5961-842-9894	4	6
5935-912-7825	2	53	5961-846-9157	5	17
5935-969-8030	2	56	5961-847-8246	8	6
5935-976-5425	13	31	5961-850-8449	10	9
5935-988-9656	13	34	5961-852-7549	4	15
5940-082-5002	9	41	5961-871-9538	4	17
5940-725-9498	7	12	5961-890-9867	5	19
5940-725-9498	8	12	5961-892-0889	10	11
5940-820-4549	12	6	5961-892-0889	6	6
5940-905-4516	2	22	5961-894-0684	7	18
5940-905-4516	11	7	5961-913-1747	8	18
5940-905-4516	12	9	5961-913-1747	7	9
5940-983-6055	2	16	5961-923-3940	8	9
5945-068-3927	2	29	5961-923-3940	9	11
5945-406-3036	4	13	5961-923-3940	5	31
5945-406-3026	6	16	5961-925-3777	9	21
5945-478-7662	6	15	5961-925-3777	10	18
5945-490-5199	2	36	5961-925-3777	4	19
5950-233-6853	3	9	5961-949-1440	5	34
5950-433-2451	12	11	5961-949-1440	5	30
5950-493-9397	2	30	5961-949-6562	6	7
5950-931-3744	4	14	5961-950-9887	4	10
5950-931-3744	5	27	5961-951-5474	6	11
5955-951-8981	3	21	5961-951-5474	3	11
5961-022-5670	10	21	5961-951-8757	5	29
5961-050-3463	9	23	5961-951-8757	6	18
5961-050-3463	11	9	5961-951-8757	7	19
5961-050-3464	11	3	5961-951-8757	8	19
5961-050-7499	4	18	5961-951-8757	9	22
5961-050-7499	5	33	5961-951-8757	10	20
5961-054-0339	4	11	5961-957-6865	9	8
5961-054-0339	6	10	5961-995-2310	3	5
5961-054-0339	7	10	5962-193-7444	3	22
5961-054-0339	8	10	5962-245-1608	3	23
5961-054-0339	9	13	5962-245-1613	3	25
5961-054-0339	10	13	5962-245-1616	3	26
5961-054-2904	10	8	5962-245-5325	4	33
5961-069-2469	11	1	5962-247-3304	3	24
5961-085-0468	11	8	5962-861-3220	6	33
5961-087-6047	4	8	5962-861-3230	7	29

SECTION IV FEDERAL STOCK NUMBER AND PART NUMBER INDEX (continued)

STOCK NUMBER	FIG. NO.	ITEM NO.	STOCK NUMBER	FIG. NO.	ITEM NO.
5962-861-3220	8	29			
5962-861-3220	9	40			
5962-861-3220	10	37			
5999-259-3980	13	22			
5999-476-6203	9	12			
5999-484-5513	3	6			
5999-484-5513	5	21			
5999-484-5513	7	11			
5999-484-5513	8	11			
599-484-5513	9	14			
5999-484-5513	10	14			
5999-496-8009	13	30			
5999-799-5539	9	15			
5999-799-5539	10	16			
5999-919-4224	4	9			
5999-919-4224	5	22			
5999-919-4224	6	9			
5999-988-5414	13	26			
6130-433-2345	2	38			
6130-433-2346	2	37			
6130-480-1244	2	39			
6210-482-3870	2	61			
6210-482-3871	2	62			
6210-482-3872	2	63			
6240-155-7836	2	6			
6625-196-2844	13	2			
6625-196-2857	2	33			
6625-196-2859	13	17			
6625-242-5795	13	35			
6625-403-1081	2	34			
6625-403-1084	2	41			
6625-403-1086	2	32			
6625-403-5843	1	1			
6625-408-5054	1	2			
6625-408-5055	2	40			
6625-409-8160	2	35			
6625-459-3401	13	4			
6625-470-4315	13	6			
6625-489-0429	13	12			
6625-489-0456	13	9			
6625-489-0457	13	14			
6625-489-2663	13	28			
6625-489-2665	13	24			
6625-489-2666	13	32			
6645-470-4305	2	55			

SECTION IV FEDERAL STOCK NUMBER AND PART INDEX (continued)

PART NUMBER	FSCM	FIG. NO.	ITEM NO.	PART NUMBER	FSCM	FIG. NO.	ITEM NO.
CH09A11F474K	81349	10	7	CX-12423/AAM-33	80063	13	12
CH09A11F474K	81349	12	10	CX-12423/AAM-33	80063	13	14
CH05EX102K	81349	4	4	CX-12423/AAM-33	80063	13	17
CK05HK102K	81349	5	13	CX-12423/AAM-33	80063	13	24
CK06EX102K	81349	8	4	CX-12423/AAM-33	80063	13	28
CK06BX103K	81349	3	1	CX-12423/AAM-33	80063	13	32
CK06BX103K	81349	5	1	CX-12423/AAM-33	80063	13	35
CK06BX103K	81349	6	2	DCM8W8S	71468	13	29
CK06BX103K	81349	7	4	DM53742-16	71468	13	30
CK06BX103K	81349	9	5	EA1A124	35344	4	13
CK06BX103K	81349	10	5	EA1A124	35344	6	16
CK06BX104K	81349	9	1	EA1B131	35344	6	15
CK06BX104K	81349	10	6	GSE22-501-0013	24727	2	36
CK06BX105K	81349	10	2	KJ2A006	35344	2	29
CK06BX472K	81349	5	5	LP9A1A104J	01884	5	8
CK06BX472K	81349	6	4	LRCXZK5	09922	13	22
CK15BX104K	81349	7	1	L R M Y Z K 5	09922	13	20
CK15BX104K	81349	8	1	L22TE19S4N1	09922	2	54
CK15BX104K	81349	9	2	L22TE95P4Y1	09922	2	52
CL21BN080SPE	81349	7	5	L22TE95S4X1	09922	2	51
CL21NB080SPE	81349	8	5	L22TF19P6N1	09922	13	27
CL65BG101MPE	81349	9	3	L22TF19P6N1	09922	13	16
CM05ED470J03	81349	3	3	L22TF95P6Y1	09922	13	25
CM05ED470J03	81349	5	11	L22TF05S6X1	09922	13	18
CM05ED470J03	81349	10	4	L22TF95S6Y1	09922	13	23
CM05ED680J03	81349	3	2	MS2537-327	96906	2	6
CM05ED121J03	81349	5	10	MS312E12-10S	96906	2	53
CM05FD181J03	81349	5	15	MS3124E12-3P	96906	12	3
CM05FD181J03	81349	6	5	MS3124E14-5P	96906	12	4
CM05FD221J03	81349	5	3	MS3124E20-41S	96906	2	50
CM05FD221J03	81349	7	3	MS312E20-41SW	96906	2	56
CM05FD221J03	81349	8	3	MS3124E22-55S	96906	2	48
CM05FD221J03	81349	9	4	MS3126F12-10P	96906	13	34
CM05FD391J03	81349	10	1	MS3126F12-10S	96906	13	36
CM06FD152J03	81349	5	7	MS3126F12-3S	96906	13	1
CM16FD182J03	81349	5	12	MS3126F14-5S	96906	13	7
CM06FD471J03	81349	5	6	MS3126F20-41P	96906	13	8
CM06FD511J03	81349	4	5	MS3126F20-41PW	96906	13	33
CM06FD621J03	81349	5	2	MS3126F20-41S	96906	13	10
CM06FD911J03	81349	5	9	MS3126F22-55P	96906	13	13
CR19AU10-000MHZ	81349	3	21	MS3126F22-55S	96906	13	15
CSR13D157KL	81349	4	3	MS3192A20A	96906	13	19
CSR13E125KL	81349	9	7	MS3192-12A	96906	13	26
CSR13F226KL	81349	3	4	MS3193A20A	96906	13	21
CSR13F226KL	81349	4	1	MS35058-21	96906	2	24
CSR13F226KL	81349	5	4	MS35059-23	96906	2	20
CSR13F226KL	81349	10	3	MS90542-11	96906	3	9
CSR13F476KL	81349	5	14	MS90542-21	96906	4	14
CSR13F685KL	81349	6	1	MS90542-21	96906	5	27
CSR13F685KL	81349	9	6	MS91528-2D2B	96906	2	60
CSR13G105KL	81349	4	2	MS91528-2M2B	96906	2	59
CSR13G105KL	81349	6	3	M18312-02-0441	81349	12	8
CU13CH331SP3	81349	7	2	M24308-2-3	81349	2	44
CU13CH331SP3	81349	8	2	M24308-2-4	81349	13	31
CW-1104/AAM-33	80063	1	1	M24308-4-3	81349	11	6
CX-12408/U	80063	13	2	M24308-4-5	81349	13	11
CX-12409/U	80063	13	6	M39019-1-32	81349	2	10
CX-12422/AAM-33	80063	13	9	M39019-5-50	81349	2	7

SECTION IV FEDERAL STOCK NUMBER AND PART NUMBER INDEX (continued)

PART NUMBER	FSCM	FIG. NO.	ITEM NO.	PART NUMBER	FSCM	FIG. NO.	ITEM NO.
M39024-10-02	81349	2	2	RN60D1001F	81349	7	20
M39024-10-03	81349	2	1	RN60D1001F	81349	8	20
M39024-11-02	81349	5	24	RN60D1001F	81349	9	26
M39024-11-02	81349	6	13	RN50D1001F	81349	10	29
M39024-11-02	81349	7	14	RN60D1002F	81349	4	27
M39024-11-02	81349	8	14	RN60D1002F	81349	5	35
M39024-11-02	81349	9	17	RN60D1002F	81349	7	21
M39024-11-03	81349	7	16	RN60D1002F	81349	8	21
M39024-11-03	81349	8	16	RN60D1002F	81349	9	31
M39024-11-03	81349	9	19	RN60D1002F	81349	10	30
M39024-11-04	81349	3	8	RN60D1002F	81249	11	2
M39024-11-04	81349	4	12	RN60D1003F	81349	4	32
M39024-11-04	81349	5	23	RN60D1003F	81349	5	41
M39024-11-04	81349	6	12	RN60D1211F	81349	10	31
M39024-11-04	81349	7	13	RN60D1301F	81349	9	28
M39024-11-04	81349	8	13	RN60D1472F	81349	5	58
M39024-11-04	81349	9	16	RN60D1500F	81349	9	38
M39024-11-06	81349	5	25	RN60D1501F	81349	5	36
M39024-11-06	81349	6	14	RN60D1501F	81349	7	25
M39024-11-06	81349	7	15	RN60D1501F	81349	8	25
M39024-11-06	81349	8	15	RN60D1501F	81349	9	27
M39024-11-06	81349	9	18	RN60D1501F	81349	10	28
M39024-11-06	81349	10	15	RN60D1621F	81349	9	32
M39024-11-08	81349	5	26	RN60D1622F	81349	5	49
NAS557-22C	80205	2	42	RN60D1820F	81349	4	22
NF207	05820	4	15	RN60D2000F	81349	4	25
REPCSGF23ABL	97954	2	8	RN60D2001F	81349	7	23
REPCSGF23ABM	97954	2	11	RN60D2001F	81349	8	23
REPCSF23ABR	97954	2	13	RN60D2001F	81349	9	30
REPCSGF23ACK	97954	2	18	RN60D2001F	81349	10	23
REPCSGF23ACL	97954	2	14	RN60D2210F	81349	7	22
REPCSGF23ACM	97954	2	15	RN60D2210F	81349	8	22
REPCSGF23ACN	97954	2	17	RN60D2211F	81349	5	54
REPCSGF23AEL	97954	2	9	RN60D2212F	81349	5	44
RE60G75R0	81349	2	49	RN60D2740F	81349	4	28
RE70G1212	81349	2	47	RN60D2741F	81349	3	18
RE75G1872	81349	2	46	RN60D2741F	81349	4	31
RE75G8061	81349	2	45	RN60D2741F	81349	9	33
RL32S240J	81349	6	20	RN60D2742F	81349	10	33
RN55C1002F	81349	6	26	RN60D3001F	81349	9	34
RN55C1212F	81349	6	22	RN60D3010F	81349	3	14
RN55C1501F	81349	6	27	RN60D3011F	81349	4	26
RN55C2001F	81349	6	23	RN60D3011F	81349	5	39
RN55C2212F	81349	5	47	RN60F3321F	81349	3	12
RN55C3011F	81349	6	25	RN60D3322F	81349	3	13
RN55C4921F	81349	6	29	RN60D3322F	81349	10	27
RN55C4751F	81349	6	31	RN60D3922F	81349	5	50
RN55C56231F	81349	6	30	RN60D3923F	81349	10	25
RN60C1961F	81349	7	28	RN60D4322F	81349	10	26
RM0C1961F	81349	8	28	RN60D4751F	81349	5	42
RN60C2611F	81349	7	26	RN60D4751F	81349	10	32
RN60C2611F	81349	8	26	RN60D4752F	81349	5	40
RN6C4751F	81349	10	35	RN60D4752F	81349	10	36
RN60D10ROF	81349	3	19	RN60D51R1F	81349	3	20
RN60D10FOF	81349	4	21	RN60D51R1F	81349	4	23
RN60D1000F	81349	3	17	RN60D51R1F	81349	5	57
RN60D1001F	81349	3	16	RN60D5110F	81349	5	38
RN60D1001F	81349	5	37	RN60D511F	81349	4	24

SECTION IV FEDERAL STOCK NUMBER AND PART NUMBER (continued)

PART NUMBER	FSCM	FIG NO.	ITEM NO.	PART NUMBER	FSCM	FIG NO.	ITEM NO.
RN60D511F	81349	5	45	HPCCSGM23AACM	97954	9	20
RN60D5620F	81349	4	29	HPCCSGM23AACM	97954	8	17
RN60D6190F	81349	5	48	HPCCS3M23AAEL	97954	4	16
RN60D6191F	81349	5	52	UP106M	81349	13	5
RN60D7501F	81349	5	55	UT4020	12969	2	23
RN60D7502F	81349	5	53	UT4020	12969	7	6
RN60D7503F	81349	10	24	WTB24PD9J391	81349	2	27
RN60D9091F	81349	5	43	08-83283-81	87034	2	61
RN65C1002F	81349	12	1	08-83283-82	87034	2	62
RN65C1331F	81349	9	37	08-83283-83	87034	2	63
RN65C1473F	81349	6	24	1N3028B	81349	10	12
RN65C2871F	81349	9	36	1N3611	81349	9	8
RN65C3830F	81349	6	21	1N3612	81349	2	5
RN65D10R0F	81349	5	56	1N3613	81349	10	8
RN65D22R1F	81349	4	30	1N3988	81349	10	11
RN65F2430F	81349	6	19	1N550	81349	8	6
RN65F2493F	81349	6	32	1N645	81349	4	8
RT22C29502	81349	6	28	1N645	81349	5	20
RT24C2P102	81349	5	51	1N746A	81349	5	17
RT24C2P102	81349	9	35	1N751A	81349	5	18
RT24C2P103	81349	4	20	1N752A	81349	3	5
RT24C2P103	81349	5	46	1N753A	81349	4	7
RT24C2P202	81349	10	34	1N754A	81349	10	9
RT24C2P501	81349	7	27	1N758A	81349	6	6
RT24C2P501	81349	8	27	1N759A	81349	4	6
RV4SAYS102A	81349	2	26	1N816	81349	7	7
RV4SYSD104A	81349	2	25	1N816	81349	8	7
RW68VR33	81349	7	24	1N816	81349	9	9
RW68VR33	81349	8	24	1N825	81349	7	9
RW69V188	81349	9	29	1N825	81349	8	9
RW70U1R00F	81349	9	25	1N825	81349	9	11
RW70U1R10F	81349	3	15	1N827	81349	6	7
RW70U1R0R0F	81349	10	22	1N914	81349	5	16
RW78U8872F	81349	2	31	1N914	81349	6	8
RW81U1210F	81349	9	39	1N914	81349	7	8
SE12XC07	81349	7	12	1N914	81349	8	8
SE12XC07	81349	8	12	1N914	81349	9	10
SE16XC01	81349	9	41	1N914	81349	10	10
SE209D01	81349	2	22	1N938B	81349	5	19
SE209D01	81349	11	7	10105DAP	07047	4	10
SE209D01	81349	12	9	10105DAP	07047	6	11
SN52702L	01295	4	33	19-1963-1	91812	2	4
SN52709L	01295	6	33	2N1724	81349	11	1
SN52709L	01295	7	29	2N2151	81349	9	23
SN52709L	01295	8	29	2N2151	81349	11	9
SN5270PL	01295	9	40	2N2219A	81349	4	18
SN52709L	01295	10	37	2N2219A	81349	5	33
SN5400J	01295	3	22	2N2222A	81349	3	11
SN5420J	01295	3	25	2N2222A	81349	5	29
SN5430J	01295	3	23	2N2222A	81349	6	18
SN5473J	01295	3	26	2N2222A	81349	7	19
SN5490J	01295	3	24	2N2222A	81349	8	19
TS-2895/AAM-33	80063	1	2	2N2222A	81349	9	22
UPCCSGM23AABL	97954	3	10	2N2222A	81349	10	20
UPCCSGM23AABM	97954	5	28	2N2432	81349	5	30
UPCCSGM23AABR	97954	6	17	2N2905A	81349	4	19
UPCCSGM23AAACK	97954	10	17	2N2905A	81349	5	34
UPCCSGM23AAACL	97954	7	17	2N2907	81349	7	18

SECTION IV FEDERAL STOCK NUMBER AND PART NUMBER INDEX (continued)

PART NUMBER	FSCM	FIG. NO.	ITEM NO.	PART NUMBER	FSCM	FIG. NO.	ITEM NO.
2N2907	81349	8	18	7717-44N	13103	6	9
2N2907A	81349	5	31	9013-000-1002	72962	12	5
2N2907A	81349	9	21				
2N2907A	81349	10	18				
2N3439	81349	10	21				
2N3506	81349	9	24				
2N3846	81349	11	3				
2N3902	81349	11	8				
2N4856	81349	4	17				
2N930	81349	5	32				
2N930	81349	10	19				
2051-2	71279	12	6				
2209-4A	13103	9	15				
2209-4A	13103	10	16				
260P9055284	56289	2	43				
33-106	72653	13	3				
33-108	72653	13	4				
37TB14	81349	2	16				
418354-1	96214	3	7				
497581-1	96214	2	12				
5JX94	56289	12	7				
519659	96214	2	55				
538025-1	96214	2	21				
538025-2	96214	2	3				
538025-3	96214	2	19				
538025-4	96214	2	28				
6111B1-10	13103	9	12				
636229-1	96214	2	30				
670111-55	96214	11	5				
692083-1	96214	12	11				
6923551	96214	2	32				
692358-1	96214	2	34				
A	96214	2	35				
692418-1	96214	2	33				
692418-1	96214	2	40				
692533-1	96214	1	3				
69473-1	96214	2	57				
695890-2	96214	11	4				
695891-1	96214	2	41				
696197-1	96214	2	58				
715384-1	96214	12	2				
715393-1	96214	12	12				
725081-1	96214	2	38				
725084-1	96214	2	39				
725126-1	96214	2	37				
7717-18N	13103	3	6				
7717-18N	13103	5	21				
7717-18N	13103	7	11				
7717-18N	13103	8	11				
7717-18N	13103	9	14				
7717-18N	13103	10	14				
7717-19DAP	13103	4	11				
7717-19DAP	13103	6	10				
7717-19DAP	13103	7	10				
7717-19DAP	13103	8	10				
7717-19DAP	13103	9	13				
7717-19DAP	13103	10	13				
7717-44N	13103	4	9				
7717-44N	13103	5	22				

By Order of the Secretary of the Army:

FRED C. WEYAND
General, United States Army
Chief of Staff

Official:

PAUL T. SMITH
Major General, United States Army
The Adjutant General

DISTRIBUTION:

To be distributed in accordance with DA Form 12-36A, (qty rqr block no. 641)
Direct and General Support maintenance requirements for AN/AAM-33.

RECOMMENDED CHANGES TO EQUIPMENT TECHNICAL PUBLICATIONS



THEN...JOT DOWN THE
DOPE ABOUT IT ON THIS FORM.
CAREFULLY TEAR IT OUT, FOLD IT
AND DROP IT IN THE MAIL.

SOMETHING WRONG WITH PUBLICATION

FROM: (PRINT YOUR UNIT'S COMPLETE ADDRESS)

DATE SENT

PUBLICATION NUMBER

PUBLICATION DATE

PUBLICATION TITLE

BE EXACT PIN-POINT WHERE IT IS

PAGE
NO.

PARA-
GRAPH

FIGURE
NO.

TABLE
NO.

IN THIS SPACE, TELL WHAT IS WRONG
AND WHAT SHOULD BE DONE ABOUT IT.

TEAR ALONG PERFORATED LINE

PRINTED NAME, GRADE OR TITLE AND TELEPHONE NUMBER

SIGN HERE

The Metric System and Equivalents

Linear Measure

1 centimeter = 10 millimeters = .39 inch
 1 decimeter = 10 centimeters = 3.94 inches
 1 meter = 10 decimeters = 39.37 inches
 1 dekameter = 10 meters = 32.8 feet
 1 hectometer = 10 dekameters = 328.08 feet
 1 kilometer = 10 hectometers = 3,280.8 feet

Weights

1 centigram = 10 milligrams = .15 grain
 1 decigram = 10 centigrams = 1.54 grains
 1 gram = 10 decigrams = .035 ounce
 1 dekagram = 10 grams = .35 ounce
 1 hectogram = 10 dekagrams = 3.52 ounces
 1 kilogram = 10 hectograms = 2.2 pounds
 1 quintal = 100 kilograms = 220.46 pounds
 1 metric ton = 10 quintals = 1.1 short tons

Liquid Measure

1 centiliter = 10 milliliters = .34 fl. ounce
 1 deciliter = 10 centiliters = 3.38 fl. ounces
 1 liter = 10 deciliters = 33.81 fl. ounces
 1 dekaliter = 10 liters = 2.64 gallons
 1 hectoliter = 10 dekaliters = 26.42 gallons
 1 kiloliter = 10 hectoliters = 264.18 gallons

Square Measure

1 sq. centimeter = 100 sq. millimeters = .155 sq. inch
 1 sq. decimeter = 100 sq. centimeters = 15.5 sq. inches
 1 sq. meter (centare) = 100 sq. decimeters = 10.76 sq. feet
 1 sq. dekameter (are) = 100 sq. meters = 1,076.4 sq. feet
 1 sq. hectometer (hectare) = 100 sq. dekameters = 2.47 acres
 1 sq. kilometer = 100 sq. hectometers = .386 sq. mile

Cubic Measure

1 cu. centimeter = 1000 cu. millimeters = .06 cu. inch
 1 cu. decimeter = 1000 cu. centimeters = 61.02 cu. inches
 1 cu. meter = 1000 cu. decimeters = 35.31 cu. feet

Approximate Conversion Factors

To change	To	Multiply by	To change	To	Multiply by
inches	centimeters	2.540	ounce-inches	newton-meters	.007062
feet	meters	.305	centimeters	inches	.394
yards	meters	.914	meters	feet	3.280
miles	kilometers	1.609	meters	yards	1.094
square inches	square centimeters	6.451	kilometers	miles	.621
square feet	square meters	.093	square centimeters	square inches	.155
square yards	square meters	.836	square meters	square feet	10.764
square miles	square kilometers	2.590	square meters	square yards	1.196
acres	square hectometers	.405	square kilometers	square miles	.386
cubic feet	cubic meters	.028	square hectometers	acres	2.471
cubic yards	cubic meters	.765	cubic meters	cubic feet	35.315
fluid ounces	milliliters	29.573	cubic meters	cubic yards	1.308
pints	liters	.473	milliliters	fluid ounces	.034
quarts	liters	.946	liters	pints	2.113
gallons	liters	3.785	liters	quarts	1.057
ounces	grams	28.349	liters	gallons	.264
pounds	kilograms	.454	grams	ounces	.035
short tons	metric tons	.907	kilograms	pounds	2.205
pound-feet	newton-meters	1.356	metric tons	short tons	1.102
pound-inches	newton-meters	.11296			

Temperature (Exact)

°F Fahrenheit temperature 5/9 (after subtracting 32) Celsius temperature °C

PIN: 005190-000